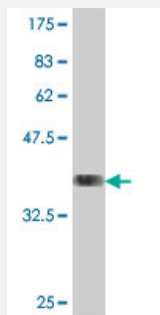


CLPS polyclonal antibody (A01)

Catalog # H00001208-A01

Size 50 uL

Applications



Western Blot detection against Immunogen (36.01 KDa) .

Specification

Product Description	Mouse polyclonal antibody raised against a partial recombinant CLPS.
Immunogen	CLPS (NP_001823, 23 a.a. ~ 112 a.a) partial recombinant protein with GST tag.
Sequence	GIINLENGELCMNSAQCKSNCCQHSSALGLARCTSMASENSECSVKTLYGIIYKPCERGLTCEG DKTIVGSITNTNFGICHDAGRSKQ
Host	Mouse
Reactivity	Human
Quality Control Testing	Antibody Reactive Against Recombinant Protein. Western Blot detection against Immunogen (36.01 KDa) .
Storage Buffer	50 % glycerol
Storage Instruction	Store at -20°C or lower. Aliquot to avoid repeated freezing and thawing.

Applications

- Western Blot (Recombinant protein)

[Protocol Download](#)

- ELISA

Gene Info — CLPS

Entrez GeneID [1208](#)

GeneBank Accession# [NM_001832](#)

Protein Accession# [NP_001823](#)

Gene Name CLPS

Gene Alias -

Gene Description colipase, pancreatic

Omim ID [120105](#)

Gene Ontology [Hyperlink](#)

Gene Summary The protein encoded by this gene is a cofactor needed by pancreatic lipase for efficient dietary lipid hydrolysis. It binds to the C-terminal, non-catalytic domain of lipase, thereby stabilizing an active conformation and considerably increasing the overall hydrophobic binding site. The gene product allows lipase to anchor noncovalently to the surface of lipid micelles, counteracting the destabilizing influence of intestinal bile salts. This cofactor is only expressed in pancreatic acinar cells, suggesting regulation of expression by tissue-specific elements. [provided by RefSeq]

Other Designations OTTHUMP00000016271|colipase|pancreatic colipase preproprotein

Disease

- [Diabetes Mellitus](#)
- [Genetic Predisposition to Disease](#)
- [Obesity](#)