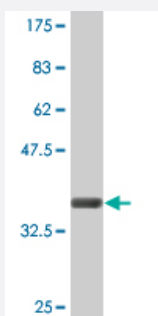


CLCN7 monoclonal antibody (M01A), clone 4A3

Catalog # H00001186-M01A

Size 200 uL

Applications



Western Blot detection against Immunogen (36.74 KDa) .

Specification

Product Description	Mouse monoclonal antibody raised against a partial recombinant CLCN7.
Immunogen	CLCN7 (NP_001278, 706 a.a. ~ 805 a.a) partial recombinant protein with GST tag. MW of the GST tag alone is 26 KDa.
Sequence	LRLKDFRDAYPRFPPIQSIHVSQDERECTMDLSEFMNPSPTYVPQEASLPRVFKLFRALGLRHLV VVDNRNQVVGLVTRKDLARYRLGKRGLEELSLAQT
Host	Mouse
Reactivity	Human
Interspecies Antigen Sequence	Mouse (98); Rat (98)
Isotype	IgG2a Kappa
Quality Control Testing	Antibody Reactive Against Recombinant Protein. Western Blot detection against Immunogen (36.74 KDa) .
Storage Buffer	In ascites fluid
Storage Instruction	Store at -20°C or lower. Aliquot to avoid repeated freezing and thawing.

Applications

- Western Blot (Recombinant protein)

[Protocol Download](#)

- ELISA

Gene Info — CLCN7

Entrez GeneID [1186](#)

GeneBank Accession# [NM_001287](#)

Protein Accession# [NP_001278](#)

Gene Name CLCN7

Gene Alias CLC-7, CLC7, FLJ26686, FLJ39644, FLJ46423, OPTA2, OPTB4

Gene Description chloride channel 7

Omim ID [166600 259700 602727](#)

Gene Ontology [Hyperlink](#)

Gene Summary

The product of this gene belongs to the CLC chloride channel family of proteins. Chloride channels play important roles in the plasma membrane and in intracellular organelles. This gene encodes chloride channel 7. Defects in this gene are the cause of osteopetrosis autosomal recessive type 4 (OPTB4), also called infantile malignant osteopetrosis type 2 as well as the cause of autosomal dominant osteopetrosis type 2 (OPTA2), also called autosomal dominant Albers-Schonberg disease or marble disease autosomal dominant. Osteopetrosis is a rare genetic disease characterized by abnormally dense bone, due to defective resorption of immature bone. OPTA2 is the most common form of osteopetrosis, occurring in adolescence or adulthood. [provided by RefSeq]

Other Designations -

Disease

- [Genetic Predisposition to Disease](#)
- [Osteopetrosis](#)

- [Osteoporosis](#)