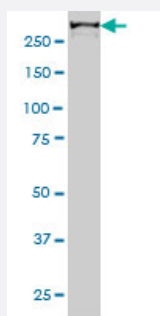


# CHD4 monoclonal antibody (M01), clone 4H4

Catalog # H00001108-M01

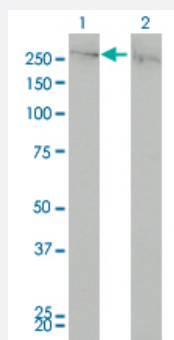
Size 100 ug

## Applications



### Western Blot (Cell lysate)

CHD4 monoclonal antibody (M01), clone 4H4 Western Blot analysis of CHD4 expression in HeLa S3 NE ( Cat # L013V3 ).

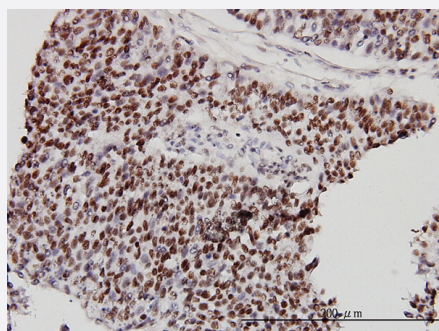


### Western Blot (Transfected lysate)

Western Blot analysis of CHD4 expression in transfected 293T cell line by CHD4 monoclonal antibody (M01), clone 4H4.

Lane 1: CHD4 transfected lysate(220 KDa).

Lane 2: Non-transfected lysate.

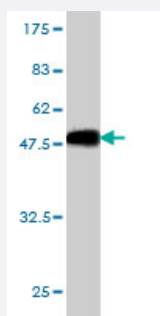
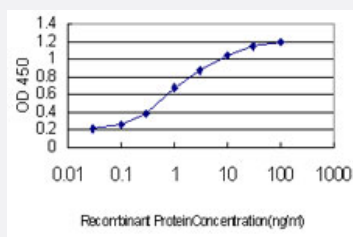


### Immunohistochemistry (Formalin/PFA-fixed paraffin-embedded sections)

Immunoperoxidase of monoclonal antibody to CHD4 on formalin-fixed paraffin-embedded human transitional cell carcinoma. [antibody concentration 3 ug/ml]

## Sandwich ELISA (Recombinant protein)

Detection limit for recombinant GST tagged CHD4 is approximately 0.03ng/ml as a capture antibody.



Western Blot detection against Immunogen (36.63 KDa) .

## Specification

<b>Product Description</b>	Mouse monoclonal antibody raised against a partial recombinant CHD4.
<b>Immunogen</b>	CHD4 (NP_001264, 1632 a.a. ~ 1730 a.a) partial recombinant protein with GST tag. MW of the GST tag alone is 26 KDa.
<b>Sequence</b>	ETEPKGAADVEKVVEEKSAIDLTPMVEDKEEKKEEEEKKEVMLQNGETPKDLNDEKQKKNIKQRF MFNIADGGFTELHSLWQNEERAATVTKKTYEWH
<b>Host</b>	Mouse
<b>Reactivity</b>	Human
<b>Interspecies Antigen Sequence</b>	Mouse (92); Rat (91)
<b>Isotype</b>	IgG2a Kappa
<b>Quality Control Testing</b>	Antibody Reactive Against Recombinant Protein. Western Blot detection against Immunogen (36.63 KDa) .
<b>Storage Buffer</b>	In 1x PBS, pH 7.4
<b>Storage Instruction</b>	Store at -20°C or lower. Aliquot to avoid repeated freezing and thawing.

## Applications

- Western Blot (Cell lysate)

CHD4 monoclonal antibody (M01), clone 4H4 Western Blot analysis of CHD4 expression in Hela S3 NE ( Cat # L013V3 ).

[Protocol Download](#)

- Western Blot (Transfected lysate)

Western Blot analysis of CHD4 expression in transfected 293T cell line by CHD4 monoclonal antibody (M01), clone 4H4.

Lane 1: CHD4 transfected lysate(220 KDa).

Lane 2: Non-transfected lysate.

[Protocol Download](#)

- Western Blot (Recombinant protein)

[Protocol Download](#)

- Immunohistochemistry (Formalin/PFA-fixed paraffin-embedded sections)

Immunoperoxidase of monoclonal antibody to CHD4 on formalin-fixed paraffin-embedded human transitional cell carcinoma.  
[antibody concentration 3 ug/ml]

[Protocol Download](#)

- Sandwich ELISA (Recombinant protein)

Detection limit for recombinant GST tagged CHD4 is approximately 0.03ng/ml as a capture antibody.

[Protocol Download](#)

- ELISA

## Gene Info — CHD4

Entrez GeneID	<a href="#">1108</a>
---------------	----------------------

GeneBank Accession#	<a href="#">NM_001273</a>
---------------------	---------------------------

Protein Accession#	<a href="#">NP_001264</a>
--------------------	---------------------------

Gene Name	CHD4
-----------	------

Gene Alias	DKFZp686E06161, Mi-2b, Mi2-BETA
------------	---------------------------------

Gene Description	chromodomain helicase DNA binding protein 4
Omim ID	<a href="#">603277</a>
Gene Ontology	<a href="#">Hyperlink</a>
Gene Summary	The product of this gene belongs to the SNF2/RAD54 helicase family. It represents the main component of the nucleosome remodeling and deacetylase complex and plays an important role in epigenetic transcriptional repression. Patients with dermatomyositis develop antibodies against this protein. [provided by RefSeq]
Other Designations	Mi-2 autoantigen 218 kDa protein

## Publication Reference

- [Physical and functional interactions between the histone H3K4 demethylase KDM5A and the nucleosome remodeling and deacetylase \(NuRD\) complex.](#)

Nishibuchi G, Shibata Y, Hayakawa T, Hayakawa N, Ohtani Y, Sinmyozu K, Tagami H, Nakayama J.

The Journal of Biological Chemistry 2014 Oct; 289(42):28956.

Application: WB-Ce, Human, HeLa cells