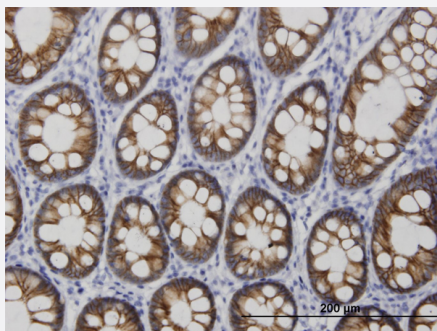


CDH17 monoclonal antibody (M03), clone 3H2

Catalog # H00001015-M03

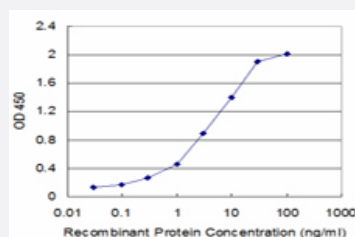
Size 100 ug

Applications



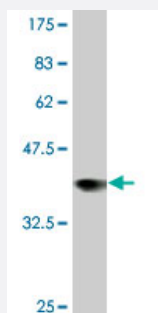
Immunohistochemistry (Formalin/PFA-fixed paraffin-embedded sections)

Immunoperoxidase of monoclonal antibody to CDH17 on formalin-fixed paraffin-embedded human colon. [antibody concentration 3 ug/ml]



Sandwich ELISA (Recombinant protein)

Detection limit for recombinant GST tagged CDH17 is approximately 0.03ng/ml as a capture antibody.



Western Blot detection against Immunogen (37.62 KDa) .

Specification

Product Description

Mouse monoclonal antibody raised against a partial recombinant CDH17.

Immunogen	CDH17 (NP_004054, 24 a.a. ~ 131 a.a) partial recombinant protein with GST tag. MW of the GST tag alone is 26 KDa.
Sequence	EGKFSGPLKPMFTFSMEGQEPSQIIFQFKANPPAVTFELTGETDNIFVIEREGLLYNRLDRETRST HNLQVAALDANGIVEGPVPITIEVKDINDNRPTFLQSKY
Host	Mouse
Reactivity	Human
Interspecies Antigen Sequence	Mouse (84); Rat (83)
Isotype	IgG1 Kappa
Quality Control Testing	Antibody Reactive Against Recombinant Protein. Western Blot detection against Immunogen (37.62 KDa) .
Storage Buffer	In 1x PBS, pH 7.4
Storage Instruction	Store at -20°C or lower. Aliquot to avoid repeated freezing and thawing.

Applications

- Western Blot (Recombinant protein)

[Protocol Download](#)

- Immunohistochemistry (Formalin/PFA-fixed paraffin-embedded sections)

Immunoperoxidase of monoclonal antibody to CDH17 on formalin-fixed paraffin-embedded human colon. [antibody concentration 3 ug/ml]

[Protocol Download](#)

- Sandwich ELISA (Recombinant protein)

Detection limit for recombinant GST tagged CDH17 is approximately 0.03ng/ml as a capture antibody.

[Protocol Download](#)

- ELISA

Gene Info — CDH17

Entrez GeneID

[1015](#)

GeneBank Accession#	NM_004063
Protein Accession#	NP_004054
Gene Name	CDH17
Gene Alias	CDH16, FLJ26931, HPT-1, HPT1, MGC138218, MGC142024
Gene Description	cadherin 17, LI cadherin (liver-intestine)
Omim ID	603017
Gene Ontology	Hyperlink
Gene Summary	<p>This gene is a member of the cadherin superfamily, genes encoding calcium-dependent, membrane-associated glycoproteins. The encoded protein is cadherin-like, consisting of an extracellular region, containing 7 cadherin domains, and a transmembrane region but lacking the conserved cytoplasmic domain. The protein is a component of the gastrointestinal tract and pancreatic ducts, acting as an intestinal proton-dependent peptide transporter in the first step in oral absorption of many medically important peptide-based drugs. The protein may also play a role in the morphological organization of liver and intestine. Alternative splicing results in multiple transcript variants. [provided by RefSeq]</p>
Other Designations	HPT-1 cadherin LI cadherin cadherin 17 cadherin-16 human intestinal peptide-associated transporter HPT-1 human peptide transporter 1 liver-intestine cadherin

Publication Reference

- [The contribution of cell phenotype to the behavior of gastric cancer.](#)

Solcia E, Klersy C, Vanoli A, Grillo F, Manca R, Tava F, Luinetti O, Fiocca R.

Gastric Cancer 2013 Jan; 16(4):462.

Application: IHC-P, Human, Human gastric cancer

Disease

- [Depressive Disorder](#)