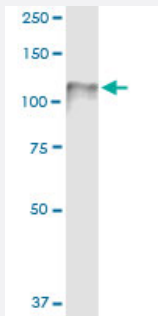


# CDH3 (Human) IP-WB Antibody Pair

Catalog # H00001001-PW1

Size 1 Set

## Applications



Immunoprecipitation of CDH3 transfected lysate using rabbit polyclonal anti-CDH3 and Protein A Magnetic Bead ([U0007](#)), and immunoblotted with mouse purified polyclonal anti-CDH3.

## Specification

<b>Product Description</b>	This IP-WB antibody pair set comes with one antibody for immunoprecipitation and another to detect the precipitated protein in western blot.
<b>Reactivity</b>	Human
<b>Quality Control Testing</b>	Immunoprecipitation-Western Blot (IP-WB) Immunoprecipitation of CDH3 transfected lysate using rabbit polyclonal anti-CDH3 and Protein A Magnetic Bead ( <a href="#">U0007</a> ), and immunoblotted with mouse purified polyclonal anti-CDH3.
<b>Supplied Product</b>	Antibody pair set content: 1. Antibody pair for IP: rabbit polyclonal anti-CDH3 (300 ul) 2. Antibody pair for WB: mouse purified polyclonal anti-CDH3 (50 ug)
<b>Storage Instruction</b>	Store reagents of the antibody pair set at -20°C or lower. Please aliquot to avoid repeated freeze thaw cycle. Reagents should be returned to -20°C storage immediately after use.

## Applications

- Immunoprecipitation-Western Blot

[Protocol Download](#)

## Gene Info — CDH3

**Entrez GeneID** [1001](#)

**Gene Name** CDH3

**Gene Alias** CDHP, HJMD, PCAD

**Gene Description** cadherin 3, type 1, P-cadherin (placental)

**Omim ID** [114021](#) [601553](#)

**Gene Ontology** [Hyperlink](#)

**Gene Summary** This gene is a classical cadherin from the cadherin superfamily. The encoded protein is a calcium-dependent cell-cell adhesion glycoprotein comprised of five extracellular cadherin repeats, a transmembrane region and a highly conserved cytoplasmic tail. This gene is located in a six-cadherin cluster in a region on the long arm of chromosome 16 that is involved in loss of heterozygosity events in breast and prostate cancer. In addition, aberrant expression of this protein is observed in cervical adenocarcinomas. Mutations in this gene have been associated with congenital hypotrichosis with juvenile macular dystrophy. [provided by RefSeq]

**Other Designations** cadherin 3, type 1|calcium-dependent adhesion protein, placental

## Pathway

- [Cell adhesion molecules \(CAMs\)](#)

## Disease

- [Colitis](#)
- [Genetic Predisposition to Disease](#)