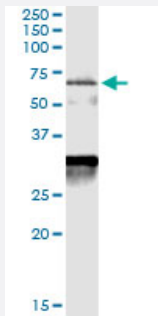


# CDC25A (Human) IP-WB Antibody Pair

Catalog # H00000993-PW2

Size 1 Set

## Applications



Immunoprecipitation of CDC25A transfected lysate using rabbit polyclonal anti-CDC25A and Protein A Magnetic Bead ([U0007](#)), and immunoblotted with mouse purified polyclonal anti-CDC25A.

## Specification

<b>Product Description</b>	This IP-WB antibody pair set comes with one antibody for immunoprecipitation and another to detect the precipitated protein in western blot.
<b>Reactivity</b>	Human
<b>Quality Control Testing</b>	Immunoprecipitation-Western Blot (IP-WB) Immunoprecipitation of CDC25A transfected lysate using rabbit polyclonal anti-CDC25A and Protein A Magnetic Bead ( <a href="#">U0007</a> ), and immunoblotted with mouse purified polyclonal anti-CDC25A.
<b>Supplied Product</b>	Antibody pair set content: 1. Antibody pair for IP: rabbit polyclonal anti-CDC25A (300 ul) 2. Antibody pair for WB: mouse purified polyclonal anti-CDC25A (50 ug)
<b>Storage Instruction</b>	Store reagents of the antibody pair set at -20°C or lower. Please aliquot to avoid repeated freeze thaw cycle. Reagents should be returned to -20°C storage immediately after use.

## Applications

- Immunoprecipitation-Western Blot

[Protocol Download](#)

## Gene Info — CDC25A

Entrez GeneID	<a href="#">993</a>
Gene Name	CDC25A
Gene Alias	CDC25A2
Gene Description	cell division cycle 25 homolog A (S. pombe)
Omim ID	<a href="#">116947</a>
Gene Ontology	<a href="#">Hyperlink</a>
Gene Summary	CDC25A is a member of the CDC25 family of phosphatases. CDC25A is required for progression from G1 to the S phase of the cell cycle. It activates the cyclin-dependent kinase CDC2 by removing two phosphate groups. CDC25A is specifically degraded in response to DNA damage, which prevents cells with chromosomal abnormalities from progressing through cell division. CDC25A is an oncogene, although its exact role in oncogenesis has not been demonstrated. Two transcript variants encoding different isoforms have been found for this gene. [provided by RefSeq]
Other Designations	M-phase inducer phosphatase 1 cell division cycle 25A dual specificity phosphatase CDC25A

## Pathway

- [Cell cycle](#)

## Disease

- [Adenocarcinoma](#)
- [Breast Neoplasms](#)
- [Esophageal Neoplasms](#)
- [Genetic Predisposition to Disease](#)
- [Lung Neoplasms](#)
- [Ovarian Neoplasms](#)
- [Pulmonary Disease](#)
- [Schizophrenia](#)
- [Tobacco Use Disorder](#)

- [Urinary Bladder Neoplasms](#)
- [Werner syndrome](#)