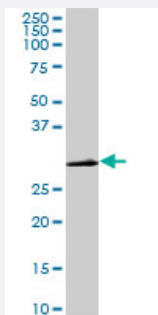


CDC2 monoclonal antibody (M04), clone 8F1

Catalog # H00000983-M04

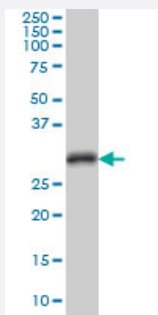
Size 100 ug

Applications



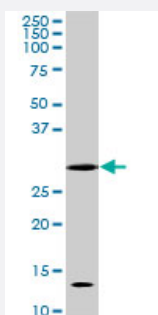
Western Blot (Cell lysate)

CDC2 monoclonal antibody (M04), clone 8F1. Western Blot analysis of CDC2 expression in PC-12 (Cat # L012V1).



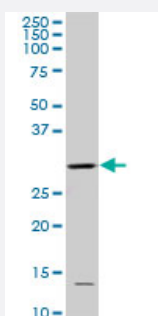
Western Blot (Cell lysate)

CDC2 monoclonal antibody (M04), clone 8F1 Western Blot analysis of CDC2 expression in HeLa S3 NE (Cat # L013V3).



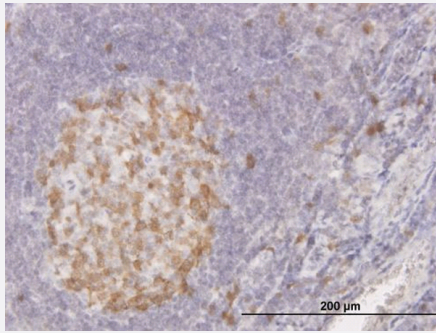
Western Blot (Cell lysate)

CDC2 monoclonal antibody (M04), clone 8F1. Western Blot analysis of CDC2 expression in Raw 264.7 (Cat # L024V1).



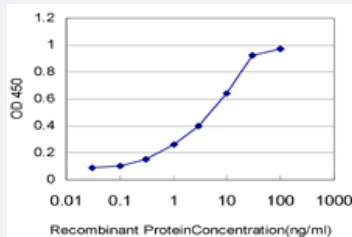
Western Blot (Cell lysate)

CDC2 monoclonal antibody (M04), clone 8F1. Western Blot analysis of CDC2 expression in NIH/3T3 (Cat # L018V1).



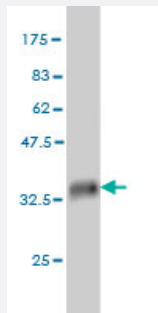
Immunohistochemistry (Formalin/PFA-fixed paraffin-embedded sections)

Immunoperoxidase of monoclonal antibody to CDC2 on formalin-fixed paraffin-embedded human tonsil. [antibody concentration 1.5 ug/ml]



Sandwich ELISA (Recombinant protein)

Detection limit for recombinant GST tagged CDC2 is approximately 0.1ng/ml as a capture antibody.



Western Blot detection against Immunogen (35.31 KDa) .

Specification

Product Description	Mouse monoclonal antibody raised against a partial recombinant CDC2.
Immunogen	CDC2 (AAH14563, 211 a.a. ~ 297 a.a) partial recombinant protein with GST tag. MW of the GST tag alone is 26 KDa.
Sequence	DQLFRIFRALGTPNNEVWPEVESLQDYKNTFPKWKPGSLASHVKNLDENGLDLLSKMLIYDPAKR ISGKMALNHPYFNDLDNQIKKM
Host	Mouse
Reactivity	Human, Mouse, Rat
Isotype	IgG2a Lambda
Quality Control Testing	Antibody Reactive Against Recombinant Protein. Western Blot detection against Immunogen (35.31 KDa) .

Storage Buffer

In 1x PBS, pH 7.4

Storage Instruction

Store at -20°C or lower. Aliquot to avoid repeated freezing and thawing.

Applications

- Western Blot (Cell lysate)

CDC2 monoclonal antibody (M04), clone 8F1. Western Blot analysis of CDC2 expression in PC-12 (Cat # L012V1).

[Protocol Download](#)

- Western Blot (Cell lysate)

CDC2 monoclonal antibody (M04), clone 8F1 Western Blot analysis of CDC2 expression in Hela S3 NE (Cat # L013V3).

[Protocol Download](#)

- Western Blot (Cell lysate)

CDC2 monoclonal antibody (M04), clone 8F1. Western Blot analysis of CDC2 expression in Raw 264.7 (Cat # L024V1).

[Protocol Download](#)

- Western Blot (Cell lysate)

CDC2 monoclonal antibody (M04), clone 8F1. Western Blot analysis of CDC2 expression in NIH/3T3 (Cat # L018V1).

[Protocol Download](#)

- Western Blot (Recombinant protein)

[Protocol Download](#)

- Immunohistochemistry (Formalin/PFA-fixed paraffin-embedded sections)

Immunoperoxidase of monoclonal antibody to CDC2 on formalin-fixed paraffin-embedded human tonsil. [antibody concentration 1.5 ug/ml]

[Protocol Download](#)

- Sandwich ELISA (Recombinant protein)

Detection limit for recombinant GST tagged CDC2 is approximately 0.1ng/ml as a capture antibody.

[Protocol Download](#)

- ELISA

Gene Info — CDC2

Entrez GeneID [983](#)

GeneBank Accession# [BC014563](#)

Protein Accession# [AAH14563](#)

Gene Name CDC2

Gene Alias CDC28A, CDK1, DKFZp686L20222, MGC111195

Gene Description cell division cycle 2, G1 to S and G2 to M

Omim ID [116940](#)

Gene Ontology [Hyperlink](#)

Gene Summary

The protein encoded by this gene is a member of the Ser/Thr protein kinase family. This protein is a catalytic subunit of the highly conserved protein kinase complex known as M-phase promoting factor (MPF), which is essential for G1/S and G2/M phase transitions of eukaryotic cell cycle. Mitotic cyclins stably associate with this protein and function as regulatory subunits. The kinase activity of this protein is controlled by cyclin accumulation and destruction through the cell cycle. The phosphorylation and dephosphorylation of this protein also play important regulatory roles in cell cycle control. Alternatively spliced transcript variants encoding different isoforms have been found for this gene. [provided by RefSeq]

Other Designations

OTTHUMP00000019660|cell cycle controller CDC2|cell division control protein 2 homolog|cell division cycle 2 protein|cyclin-dependent kinase 1|p34 protein kinase

Pathway

- [Cell cycle](#)
- [Gap junction](#)
- [p53 signaling pathway](#)

Disease

- [Alzheimer disease](#)
- [Breast cancer](#)
- [Breast Neoplasms](#)
- [Dementia](#)

- [Genetic Predisposition to Disease](#)
- [Lung Neoplasms](#)
- [Pulmonary Disease](#)