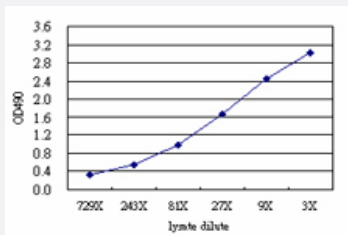


SIGLEC6 (Human) Matched Antibody Pair

Catalog # H00000946-AP51

Size 1 Set

Applications



Sandwich ELISA detection sensitivity ranging from approximately 729x to 3x dilution of the SIGLEC6 293T overexpression lysate (non-denatured).

Specification

| | |
|--------------------------------|--|
| Product Description | This antibody pair set comes with a matched antibody pair to detect and quantify the protein level of human SIGLEC6. |
| Reactivity | Human |
| Quality Control Testing | Standard curve using SIGLEC6 293T overexpression lysate (non-denatured) as an analyte. Sandwich ELISA detection sensitivity ranging from approximately 729x to 3x dilution of the SIGLEC6 293T overexpression lysate (non-denatured). |
| Supplied Product | Antibody pair set content: 1. Capture antibody: mouse monoclonal anti-SIGLEC6 (100 ug) 2. Detection antibody: rabbit purified polyclonal anti-SIGLEC6 (50 ug) *Reagents are sufficient for at least 3-5 x 96 well plates using recommended protocols. |
| Storage Instruction | Store reagents of the antibody pair set at -20°C or lower. Please aliquot to avoid repeated freeze thaw cycle. Reagents should be returned to -20°C storage immediately after use. |

Applications

- ELISA Pair (Transfected lysate)

[Protocol Download](#)

Gene Info — SIGLEC6

| | |
|--------------------|---|
| Entrez GeneID | 946 |
| Gene Name | SIGLEC6 |
| Gene Alias | CD327, CD33L, CD33L1, CDw327, OBBP1, SIGLEC-6 |
| Gene Description | sialic acid binding Ig-like lectin 6 |
| Omim ID | 604405 |
| Gene Ontology | Hyperlink |
| Other Designations | CD33 antigen-like 1 CDw327 antigen OTTHUMP00000164940 OTTHUMP00000164941 OTTHUMP00000164942 Obesity-binding protein 1 |