

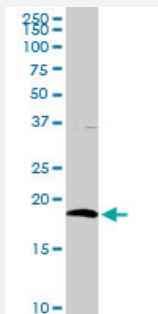
MaxPab®

CD3D purified MaxPab rabbit polyclonal antibody (D01P)

Catalog # H00000915-D01P

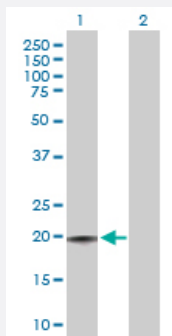
Size 100 ug

Applications



Western Blot (Tissue lysate)

CD3D MaxPab rabbit polyclonal antibody. Western Blot analysis of CD3D expression in mouse kidney.

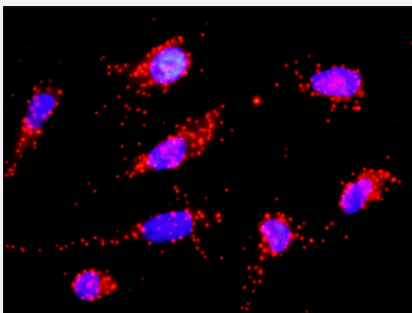


Western Blot (Transfected lysate)

Western Blot analysis of CD3D expression in transfected 293T cell line ([H00000915-T01](#)) by CD3D MaxPab polyclonal antibody.

Lane 1: CD3D transfected lysate(18.90 kDa).

Lane 2: Non-transfected lysate.



In situ Proximity Ligation Assay (Cell)

Proximity Ligation Analysis of protein-protein interactions between CD3D and CANX. HeLa cells were stained with anti-CD3D rabbit purified polyclonal 1:1200 and anti-CANX mouse monoclonal antibody 1:50. Each red dot represents the detection of protein-protein interaction complex, and nuclei were counterstained with DAPI (blue).

Specification

Product Description

Rabbit polyclonal antibody raised against a full-length human CD3D protein.

Immunogen	CD3D (NP_000723.1, 1 a.a. ~ 171 a.a) full-length human protein.
Sequence	MEHSTFLSGLVLATLLSQVSPFKIPIEELEDRVFVNCNTSITWVEGTVGTLLSDITRLDLGKRILDPR GIYRCNGTDIYKDKESTVQVHYRMCQSCVELDPATVAGIIVTDVIATLLLALGVFCFAGHETGRLSG AADTQALLRNDQVYQPLRDRDDAQYSHLGGNWARNK
Host	Rabbit
Reactivity	Human, Mouse
Quality Control Testing	Antibody reactive against mammalian transfected lysate.
Storage Buffer	In 1x PBS, pH 7.4
Storage Instruction	Store at -20°C or lower. Aliquot to avoid repeated freezing and thawing.

Applications

- Western Blot (Tissue lysate)

CD3D MaxPab rabbit polyclonal antibody. Western Blot analysis of CD3D expression in mouse kidney.

[Protocol Download](#)

- Western Blot (Transfected lysate)

Western Blot analysis of CD3D expression in transfected 293T cell line ([H00000915-T01](#)) by CD3D MaxPab polyclonal antibody.

Lane 1: CD3D transfected lysate(18.90 KDa).

Lane 2: Non-transfected lysate.

[Protocol Download](#)

- In situ* Proximity Ligation Assay (Cell)

Proximity Ligation Analysis of protein-protein interactions between CD3D and CANX. HeLa cells were stained with anti-CD3D rabbit purified polyclonal 1:1200 and anti-CANX mouse monoclonal antibody 1:50. Each red dot represents the detection of protein-protein interaction complex, and nuclei were counterstained with DAPI (blue).

Gene Info — CD3D

Entrez GeneID	915
GeneBank Accession#	NM_000732
Protein Accession#	NP_000723.1

Gene Name	CD3D
Gene Alias	CD3-DELTA, T3D
Gene Description	CD3d molecule, delta (CD3-TCR complex)
Omim ID	186790 600802
Gene Ontology	Hyperlink
Gene Summary	<p>The protein encoded by this gene is part of the T-cell receptor/CD3 complex (TCR/CD3 complex) and is involved in T-cell development and signal transduction. The encoded membrane protein represents the delta subunit of the CD3 complex, and along with four other CD3 subunits, binds either TCR alpha/beta or TCR gamma/delta to form the TCR/CD3 complex on the surface of T-cells. Defects in this gene are a cause of severe combined immunodeficiency autosomal recessive T-cell-negative/B-cell-positive/NK-cell-positive (SCIDBNK). Two transcript variants encoding different isoforms have been found for this gene. Other variants may also exist, but the full-length natures of their transcripts has yet to be defined. [provided by RefSeq]</p>
Other Designations	CD3D antigen, delta polypeptide CD3d antigen, delta polypeptide (TIT3 complex) T-cell receptor T3 delta chain T-cell surface glycoprotein CD3 delta chain

Pathway

- [Hematopoietic cell lineage](#)
- [Primary immunodeficiency](#)
- [T cell receptor signaling pathway](#)

Disease

- [Celiac Disease](#)
- [Genetic Predisposition to Disease](#)