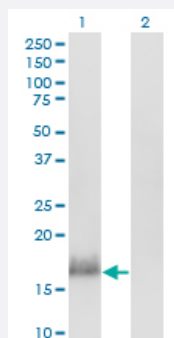


CALML3 monoclonal antibody (M04), clone 2A11

Catalog # H00000810-M04

Size 100 ug

Applications

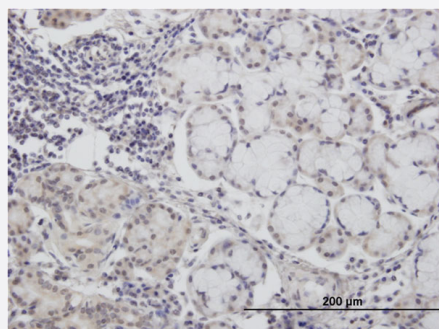


Western Blot (Transfected lysate)

Western Blot analysis of CALML3 expression in transfected 293T cell line by CALML3 monoclonal antibody (M04), clone 2A11.

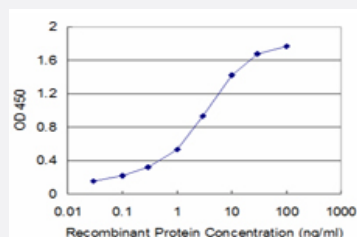
Lane 1: CALML3 transfected lysate(16.9 KDa).

Lane 2: Non-transfected lysate.



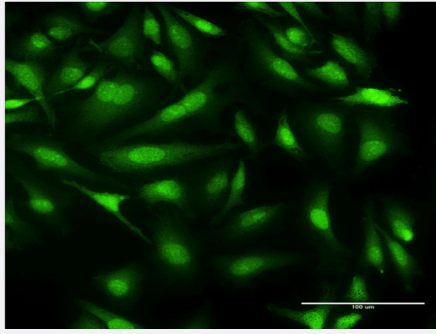
Immunohistochemistry (Formalin/PFA-fixed paraffin-embedded sections)

Immunoperoxidase of monoclonal antibody to CALML3 on formalin-fixed paraffin-embedded human salivary gland. [antibody concentration 12 ug/ml]



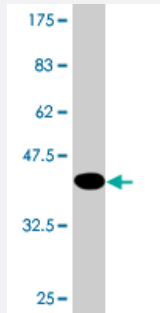
Sandwich ELISA (Recombinant protein)

Detection limit for recombinant GST tagged CALML3 is approximately 0.1ng/ml as a capture antibody.



Immunofluorescence

Immunofluorescence of monoclonal antibody to CALML3 on HeLa cell .
[antibody concentration 10 ug/ml]



Western Blot detection against Immunogen (42.13 KDa) .

Specification

Product Description	Mouse monoclonal antibody raised against a full-length recombinant CALML3.
Immunogen	CALML3 (AAH31889, 1 a.a. ~ 149 a.a) full-length recombinant protein with GST tag. MW of the GST tag alone is 26 KDa.
Sequence	MADQLTEEQVTEFKEAFSLFDKDGDCITTRELGTVMRSLGQNPTEAELRDMMSIDRDGNGTV DFPEFLGMMARKMKDTDNEEEIREAFRVFDKDGNGFVSAAELRHVMTRLGEKLSDEEVDEMIRA ADTDGDGQVNYEEFVRVLVSK
Host	Mouse
Reactivity	Human
Isotype	IgG2b Kappa
Quality Control Testing	Antibody Reactive Against Recombinant Protein. Western Blot detection against Immunogen (42.13 KDa) .
Storage Buffer	In 1x PBS, pH 7.4
Storage Instruction	Store at -20°C or lower. Aliquot to avoid repeated freezing and thawing.

Applications

- Western Blot (Transfected lysate)

Western Blot analysis of CALML3 expression in transfected 293T cell line by CALML3 monoclonal antibody (M04), clone 2A11.

Lane 1: CALML3 transfected lysate(16.9 KDa).

Lane 2: Non-transfected lysate.

[Protocol Download](#)

- Western Blot (Recombinant protein)

[Protocol Download](#)

- Immunohistochemistry (Formalin/PFA-fixed paraffin-embedded sections)

Immunoperoxidase of monoclonal antibody to CALML3 on formalin-fixed paraffin-embedded human salivary gland. [antibody concentration 12 ug/ml]

[Protocol Download](#)

- Sandwich ELISA (Recombinant protein)

Detection limit for recombinant GST tagged CALML3 is approximately 0.1ng/ml as a capture antibody.

[Protocol Download](#)

- ELISA

- Immunofluorescence

Immunofluorescence of monoclonal antibody to CALML3 on HeLa cell . [antibody concentration 10 ug/ml]

Gene Info — CALML3

Entrez GeneID	810
---------------	---------------------

GeneBank Accession#	BC031889
---------------------	--------------------------

Protein Accession#	AAH31889
--------------------	--------------------------

Gene Name	CALML3
-----------	--------

Gene Alias	CLP
------------	-----

Gene Description	calmodulin-like 3
------------------	-------------------

Omim ID	114184
---------	------------------------

Gene Ontology

[Hyperlink](#)

Other Designations

-

Pathway

- [Calcium signaling pathway](#)
- [Glioma](#)
- [GnRH signaling pathway](#)
- [Insulin signaling pathway](#)
- [Long-term potentiation](#)
- [Melanogenesis](#)
- [Neurotrophin signaling pathway](#)
- [Olfactory transduction](#)
- [Phosphatidylinositol signaling system](#)
- [Vascular smooth muscle contraction](#)

Disease

- [Alzheimer Disease](#)
- [Genetic Predisposition to Disease](#)