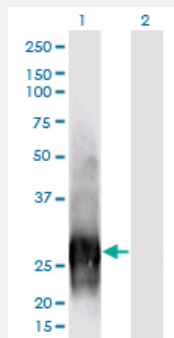


CALB1 monoclonal antibody (M01), clone 1F6

Catalog # H00000793-M01

Size 100 ug

Applications

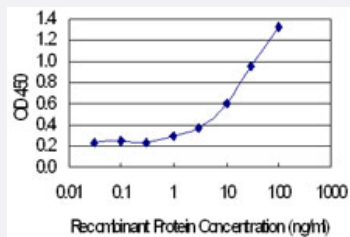


Western Blot (Transfected lysate)

Western Blot analysis of CALB1 expression in transfected 293T cell line by CALB1 monoclonal antibody (M01), clone 1F6.

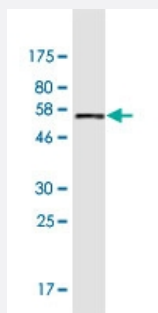
Lane 1: CALB1 transfected lysate (Predicted MW: 30 KDa).

Lane 2: Non-transfected lysate.



Sandwich ELISA (Recombinant protein)

Detection limit for recombinant GST tagged CALB1 is 0.3 ng/ml as a capture antibody.



Western Blot detection against Immunogen (56.4 KDa) .

Specification

Product Description

Mouse monoclonal antibody raised against a full-length recombinant CALB1.

Immunogen	CALB1 (NP_004920.1, 1 a.a. ~ 261 a.a) full-length recombinant protein with GST tag. MW of the GST tag alone is 26 KDa.
Sequence	MAESHLQSSLITASQFFEIWLHFDADGSGYLEGKELQNLIQELQQARKKAGLELSPEMKTTFVDQY GQRDDGKIGMELAHVLPTEENFLLLFRCQQLKSCEEFMKTWRKYDTHSGFIEEELKNFLKDLL EKANKTVDDTKLAEYDLMKLFDSDNNDGKLELTEMARLLPVQENFLLKFQGIKMGKEFNKAFF LYDQDGNNGYIDENELDALLKDLCEKNKQDLINNITTYKKNIMALSDGGKLYRTDLALILCAGDN
Host	Mouse
Reactivity	Human
Interspecies Antigen Sequence	Mouse (98); Rat (98)
Isotype	IgG2a Kappa
Quality Control Testing	Antibody Reactive Against Recombinant Protein. Western Blot detection against Immunogen (56.4 KDa) .
Storage Buffer	In 1x PBS, pH 7.4
Storage Instruction	Store at -20°C or lower. Aliquot to avoid repeated freezing and thawing.

Applications

- Western Blot (Transfected lysate)

Western Blot analysis of CALB1 expression in transfected 293T cell line by CALB1 monoclonal antibody (M01), clone 1F6.

Lane 1: CALB1 transfected lysate (Predicted MW: 30 KDa).

Lane 2: Non-transfected lysate.

[Protocol Download](#)

- Western Blot (Recombinant protein)

[Protocol Download](#)

- Sandwich ELISA (Recombinant protein)

Detection limit for recombinant GST tagged CALB1 is 0.3 ng/ml as a capture antibody.

[Protocol Download](#)

- ELISA

Gene Info — CALB1

Entrez GeneID [793](#)

GeneBank Accession# [NM_004929.2](#)

Protein Accession# [NP_004920.1](#)

Gene Name CALB1

Gene Alias CALB

Gene Description calbindin 1, 28kDa

Omim ID [114050](#)

Gene Ontology [Hyperlink](#)

Gene Summary Calbindin is a calcium-binding protein belonging to the troponin C superfamily. It was originally described as a 27-kD protein induced by vitamin D in the duodenum of the chick. In the brain, its synthesis is independent of vitamin-D-derived hormones. Calbindin contains 4 active calcium-binding domains, and 2 modified domains that presumably have lost their calcium-binding capacity. The neurons in brains of patients with Huntington disease are calbindin-depleted. [provided by RefSeq]

Other Designations RTVL-H protein|calbindin 1|calbindin 1, (28kD)

Disease

- [Genetic Predisposition to Disease](#)
- [Parkinson disease](#)