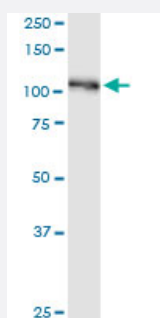


# BUB1B monoclonal antibody (M01A), clone 2G9

Catalog # H00000701-M01A

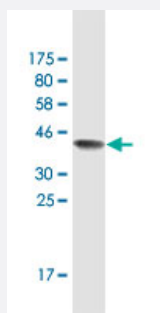
Size 200 uL

## Applications



### Western Blot (Tissue lysate)

BUB1B monoclonal antibody (M01A), clone 2G9. Western Blot analysis of BUB1B expression in human spleen.



Western Blot detection against Immunogen (39.93 KDa) .

## Specification

### Product Description

Mouse monoclonal antibody raised against a partial recombinant BUB1B.

### Immunogen

BUB1B (AAH18739, 1 a.a. ~ 130 a.a) partial recombinant protein with GST tag. MW of the GST tag alone is 26 KDa.

### Sequence

MAAVKKEGGALSEAMSLEGDEWELSKENVQPLRQGRIMSTLQGALAQESACNNTLQQQKRAFE  
YEIRFYTGNDPLDVWDRIYSWTEQNYPPQGGKESNMSTLLERAVEALQGEKRYSDPRFLNLWLKL  
GR

### Host

Mouse

### Reactivity

Human

<b>Interspecies Antigen Sequence</b>	Mouse (82)
<b>Isotype</b>	IgG1 Kappa
<b>Quality Control Testing</b>	Antibody Reactive Against Recombinant Protein. Western Blot detection against Immunogen (39.93 KDa) .
<b>Storage Buffer</b>	In ascites fluid
<b>Storage Instruction</b>	Store at -20°C or lower. Aliquot to avoid repeated freezing and thawing.

## Applications

- Western Blot (Tissue lysate)

BUB1B monoclonal antibody (M01A), clone 2G9. Western Blot analysis of BUB1B expression in human spleen.

[Protocol Download](#)

- Western Blot (Recombinant protein)

[Protocol Download](#)

- ELISA

## Gene Info — BUB1B

<b>Entrez GeneID</b>	<a href="#">701</a>
<b>GeneBank Accession#</b>	<a href="#">BC018739</a>
<b>Protein Accession#</b>	<a href="#">AAH18739</a>
<b>Gene Name</b>	BUB1B
<b>Gene Alias</b>	BUB1beta, BUBR1, Bub1A, MAD3L, SSK1, hBUBR1
<b>Gene Description</b>	budding uninhibited by benzimidazoles 1 homolog beta (yeast)
<b>Omim ID</b>	<a href="#">114500 602860</a>
<b>Gene Ontology</b>	<a href="#">Hyperlink</a>

**Gene Summary**

This gene encodes a kinase involved in spindle checkpoint function. The protein has been localized to the kinetochore and plays a role in the inhibition of the anaphase-promoting complex/cyclosome (APC/C), delaying the onset of anaphase and ensuring proper chromosome segregation. Impaired spindle checkpoint function has been found in many forms of cancer. [provided by RefSeq]

**Other Designations**

BUB1 budding uninhibited by benzimidazoles 1 homolog beta|MAD3/BUB1-related protein kinase|budding uninhibited by benzimidazoles 1, beta

## Pathway

- [Cell cycle](#)

## Disease

- [Adenocarcinoma](#)
- [Breast cancer](#)
- [Breast Neoplasms](#)
- [Carcinoma](#)
- [Esophageal Neoplasms](#)
- [Genetic Predisposition to Disease](#)
- [Kidney Failure](#)
- [Lung Neoplasms](#)
- [Pulmonary Disease](#)