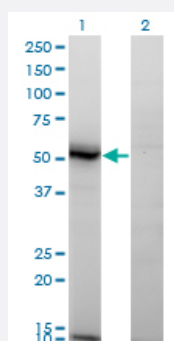


ASAH1 monoclonal antibody (M02), clone 1A7

Catalog # H00000427-M02

Size 100 ug

Applications

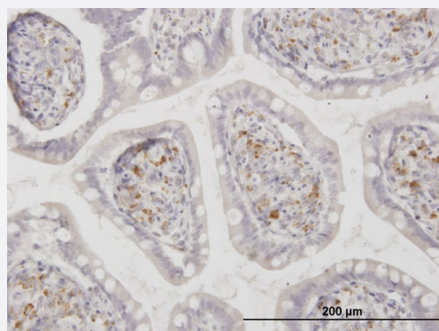


Western Blot (Transfected lysate)

Western Blot analysis of ASAH1 expression in transfected 293T cell line by ASAH1 monoclonal antibody (M02), clone 1A7.

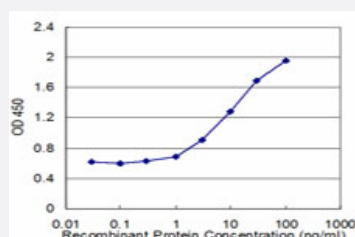
Lane 1: ASAH1 transfected lysate(45 KDa).

Lane 2: Non-transfected lysate.



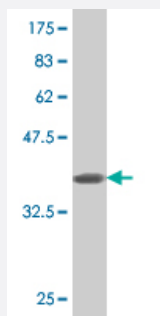
Immunohistochemistry (Formalin/PFA-fixed paraffin-embedded sections)

Immunoperoxidase of monoclonal antibody to ASAH1 on formalin-fixed paraffin-embedded human small Intestine. [antibody concentration 3 ug/ml]



Sandwich ELISA (Recombinant protein)

Detection limit for recombinant GST tagged ASAH1 is approximately 1ng/ml as a capture antibody.



Western Blot detection against Immunogen (36.74 KDa) .

Specification

Product Description	Mouse monoclonal antibody raised against a partial recombinant ASAH1.
Immunogen	ASAH1 (NP_808592, 25 a.a. ~ 124 a.a) partial recombinant protein with GST tag. MW of the GST tag alone is 26 KDa.
Sequence	PPWTEDCRKSTYPPSGPTYRGAVPWYINLDLPPYKRWHELMMLDKAPMLKVMNSLKNMINTFVPSGKVMQVVDEKLPGLLGNFPGPFEEEMKGIAAVTD
Host	Mouse
Reactivity	Human
Interspecies Antigen Sequence	Mouse (74); Rat (79)
Isotype	IgG3 Kappa
Quality Control Testing	Antibody Reactive Against Recombinant Protein. Western Blot detection against Immunogen (36.74 KDa) .
Storage Buffer	In 1x PBS, pH 7.4
Storage Instruction	Store at -20°C or lower. Aliquot to avoid repeated freezing and thawing.

Applications

- Western Blot (Transfected lysate)

Western Blot analysis of ASAH1 expression in transfected 293T cell line by ASAH1 monoclonal antibody (M02), clone 1A7.

Lane 1: ASAH1 transfected lysate(45 KDa).

Lane 2: Non-transfected lysate.

[Protocol Download](#)

- Western Blot (Recombinant protein)

[Protocol Download](#)

- Immunohistochemistry (Formalin/PFA-fixed paraffin-embedded sections)

Immunoperoxidase of monoclonal antibody to ASAH1 on formalin-fixed paraffin-embedded human small Intestine. [antibody concentration 3 ug/ml]

[Protocol Download](#)

- Sandwich ELISA (Recombinant protein)

Detection limit for recombinant GST tagged ASAH1 is approximately 1ng/ml as a capture antibody.

[Protocol Download](#)

- ELISA

Gene Info — ASAH1

Entrez GeneID	427
GeneBank Accession#	NM_177924
Protein Accession#	NP_808592
Gene Name	ASAH1
Gene Alias	AC, ASAH, FLJ21558, FLJ22079, PHP, PHP32
Gene Description	N-acylsphingosine amidohydrolase (acid ceramidase) 1
Omim ID	228000
Gene Ontology	Hyperlink
Gene Summary	This gene encodes a heterodimeric protein consisting of a nonglycosylated alpha subunit and a glycosylated beta subunit that is cleaved to the mature enzyme posttranslationally. The encoded protein catalyzes the synthesis and degradation of ceramide into sphingosine and fatty acid. Mutations in this gene have been associated with a lysosomal storage disorder known as Farber disease. Multiple transcript variants encoding several distinct isoforms have been identified for this gene. [provided by RefSeq]
Other Designations	N-acylsphingosine amidohydrolase 1 OTTHUMP00000122482 acylsphingosine deacylase putative 32 kDa heart protein

Pathway

- [Lysosome](#)
- [Metabolic pathways](#)
- [Sphingolipid metabolism](#)

Disease

- [Cardiovascular Diseases](#)
- [Diabetes Mellitus](#)
- [Edema](#)
- [Tobacco Use Disorder](#)