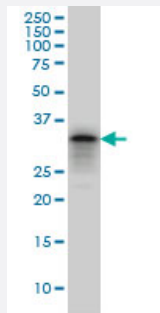


PHOX2A monoclonal antibody (M01), clone 4F6

Catalog # H00000401-M01

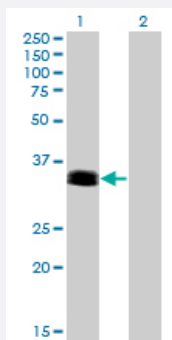
Size 100 ug

Applications



Western Blot (Cell lysate)

PHOX2A monoclonal antibody (M01), clone 4F6 Western Blot analysis of PHOX2A expression in PC-12 (Cat # L012V1).

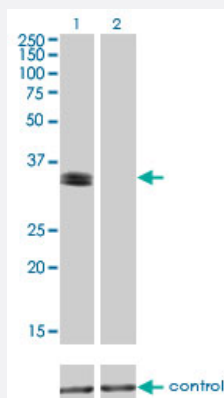


Western Blot (Transfected lysate)

Western Blot analysis of PHOX2A expression in transfected 293T cell line by PHOX2A monoclonal antibody (M01), clone 4F6.

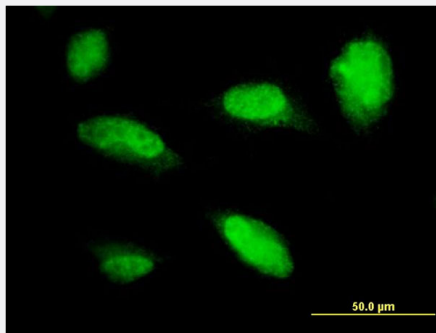
Lane 1: PHOX2A transfected lysate(29.7 KDa).

Lane 2: Non-transfected lysate.



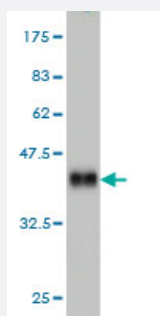
RNAi Knockdown (Antibody validated)

Western blot analysis of PHOX2A over-expressed 293 cell line, cotransfected with PHOX2A Validated Chimera RNAi (Cat # H00000401-R01V) (Lane 2) or non-transfected control (Lane 1). Blot probed with PHOX2A monoclonal antibody (M01), clone 4F6 (Cat # H00000401-M01). GAPDH (36.1 kDa) used as specificity and loading control.



Immunofluorescence

Immunofluorescence of monoclonal antibody to PHOX2A on HeLa cell.
[antibody concentration 10 ug/ml]



Western Blot detection against Immunogen (35.64 KDa) .

Specification

Product Description	Mouse monoclonal antibody raised against a partial recombinant PHOX2A.
Immunogen	PHOX2A (NP_005160, 1 a.a. ~ 90 a.a) partial recombinant protein with GST tag. MW of the GST tag alone is 26 KDa.
Sequence	MDYSYLSYDSCVAAMEASAYGDFGACSQPGGFQYSPLRPAFPAAGPPCPALGSSNCALGALRDHQPAPYSAVPYKFFPEPSGLHEKRKQ
Host	Mouse
Reactivity	Human, Rat
Isotype	IgG2a Kappa
Quality Control Testing	Antibody Reactive Against Recombinant Protein. Western Blot detection against Immunogen (35.64 KDa) .
Storage Buffer	In 1x PBS, pH 7.4
Storage Instruction	Store at -20°C or lower. Aliquot to avoid repeated freezing and thawing.

Applications

- Western Blot (Cell lysate)

PHOX2A monoclonal antibody (M01), clone 4F6 Western Blot analysis of PHOX2A expression in PC-12 (Cat # L012V1).

[Protocol Download](#)

- Western Blot (Transfected lysate)

Western Blot analysis of PHOX2A expression in transfected 293T cell line by PHOX2A monoclonal antibody (M01), clone 4F6.

Lane 1: PHOX2A transfected lysate(29.7 KDa).

Lane 2: Non-transfected lysate.

[Protocol Download](#)

- Western Blot (Recombinant protein)

[Protocol Download](#)

- ELISA

- RNAi Knockdown (Antibody validated)

Western blot analysis of PHOX2A over-expressed 293 cell line, cotransfected with PHOX2A Validated Chimera RNAi (Cat # H00000401-R01V) (Lane 2) or non-transfected control (Lane 1). Blot probed with PHOX2A monoclonal antibody (M01), clone 4F6 (Cat # H00000401-M01). GAPDH (36.1 kDa) used as specificity and loading control.

[Protocol Download](#)

- Immunofluorescence

Immunofluorescence of monoclonal antibody to PHOX2A on HeLa cell. [antibody concentration 10 ug/ml]

Gene Info — PHOX2A

Entrez GeneID [401](#)

GeneBank Accession# [NM_005169](#)

Protein Accession# [NP_005160](#)

Gene Name PHOX2A

Gene Alias ARIX, CFEOM2, FEOM2, MGC52227, NCAM2, PMX2A

Gene Description paired-like homeobox 2a

Omim ID [602078](#) [602753](#)

Gene Ontology

[Hyperlink](#)

Gene Summary

The protein encoded by this gene contains a paired-like homeodomain most similar to that of the *Drosophila aristaless* gene product. The encoded protein plays a central role in development of the autonomic nervous system. It regulates the expression of tyrosine hydroxylase and dopamine beta-hydroxylase, two catecholaminergic biosynthetic enzymes essential for the differentiation and maintenance of the noradrenergic neurotransmitter phenotype. The encoded protein has also been shown to regulate transcription of the alpha3 nicotinic acetylcholine receptor gene. Mutations in this gene have been associated with autosomal recessive congenital fibrosis of the extraocular muscles. [provided by RefSeq]

Other Designations

aristaless homeobox homolog | arix homeodomain protein

Disease

- [Sudden Infant Death](#)