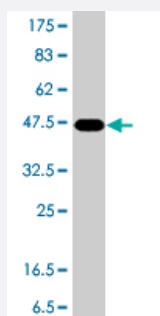


RHOH polyclonal antibody (A01)

Catalog # H00000399-A01

Size 50 uL

Applications



Western Blot detection against Immunogen (47.12 KDa) .

Specification

Product Description	Mouse polyclonal antibody raised against a full-length recombinant RHOH.
Immunogen	RHOH (AAH14261.1, 1 a.a. ~ 191 a.a) full-length recombinant protein with GST tag.
Sequence	MLSSIKCVLVGDSAVGKTSLLVRFTSETFPEAYKPTVYENTGVDVFMDGIQISLGLWDTAGNDAFR SIRPLSYQQADVVLNMCYSVANHNSFLNLKKNKWIGEIRSNLPCTPVLVVVTQTDQREMGPFRASCV NAMEGKKLAQDVRAKGYLECSALSNRGVQQVFECVRTAVNQARRRNRRLFSINECKIF
Host	Mouse
Reactivity	Human
Interspecies Antigen Sequence	Mouse (96); Rat (96)
Quality Control Testing	Antibody Reactive Against Recombinant Protein. Western Blot detection against Immunogen (47.12 KDa) .
Storage Buffer	50 % glycerol
Storage Instruction	Store at -20°C or lower. Aliquot to avoid repeated freezing and thawing.

Applications

- Western Blot (Recombinant protein)

[Protocol Download](#)

- ELISA

Gene Info — RHOH

Entrez GeneID	399
GeneBank Accession#	BC014261
Protein Accession#	AAH14261.1
Gene Name	RHOH
Gene Alias	ARHH, TTF
Gene Description	ras homolog gene family, member H
Omim ID	602037
Gene Ontology	Hyperlink
Gene Summary	The protein encoded by this gene is a member of the Ras superfamily of small GTPases. Expression of a chimeric transcript of LAZ3 and this gene has been reported as a result of the translocation t(3;4) in non-Hodgkin's lymphomas. This gene encodes a small G-like protein, and unlike most other small G proteins which are expressed ubiquitously, this gene is transcribed only in hemopoietic cells. [provided by RefSeq]
Other Designations	TTF, translocation three four rho-related GTP-binding protein

Pathway

- [Leukocyte transendothelial migration](#)

Disease

- [Tobacco Use Disorder](#)