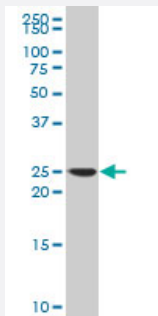


# ARHGDIA polyclonal antibody (A02)

Catalog # H00000396-A02

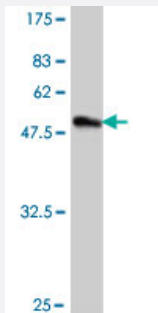
Size 50 uL

## Applications



### Western Blot (Cell lysate)

ARHGDIA polyclonal antibody (A02), Lot # 050921JC01 Western Blot analysis of ARHGDIA expression in SJCRH30 ( Cat # L027V1 ).



Western Blot detection against Immunogen (48.55 KDa) .

## Specification

### Product Description

Mouse polyclonal antibody raised against a full-length recombinant ARHGDIA.

### Immunogen

ARHGDIA (AAH05851, 1 a.a. ~ 204 a.a) full-length recombinant protein with GST tag.

### Sequence

MAEQEPTAEQLAQIAAENEDEHSVNYKPPAQKSIQEIQELDKDDESLRKYKEALLGRVAVSADP  
NVPNVVVTGLTLVCSSAPGPLELDLTGDLSEFKKQSFVLKEGVEYRIKISFRVNREIVSGMKYQHT  
YRKGVKIDKTDYMGVSYGPRAEEYEFLTPVEEAPKGMLARGSYSIKSRFTDDDKTDHLSWEWNLT  
IKKDWKD

### Host

Mouse

### Reactivity

Human

**Quality Control Testing**

Antibody Reactive Against Recombinant Protein.  
Western Blot detection against Immunogen (48.55 KDa) .

**Storage Buffer**

50 % glycerol

**Storage Instruction**

Store at -20°C or lower. Aliquot to avoid repeated freezing and thawing.

## Applications

- Western Blot (Cell lysate)

ARHGDIA polyclonal antibody (A02), Lot # 050921JC01 Western Blot analysis of ARHGDIA expression in SJCRH30 ( Cat # L027V1 ).

[Protocol Download](#)

- Western Blot (Recombinant protein)

[Protocol Download](#)

- ELISA

## Gene Info — ARHGDIA

**Entrez GeneID**

[396](#)

**GeneBank Accession#**

[BC005851](#)

**Protein Accession#**

[AAH05851](#)

**Gene Name**

ARHGDIA

**Gene Alias**

GDIA1, MGC117248, RHOGDI, RHOGDI-1

**Gene Description**

Rho GDP dissociation inhibitor (GDI) alpha

**Omim ID**

[601925](#)

**Gene Ontology**

[Hyperlink](#)

**Gene Summary**

Aplysia Ras-related homologs (ARHs), also called Rho genes, belong to the RAS gene superfamily encoding small guanine nucleotide exchange (GTP/GDP) factors. The ARH proteins may be kept in the inactive, GDP-bound state by interaction with GDP dissociation inhibitors, such as ARHGDIA (Leffers et al., 1993 [PubMed 8262133]).[supplied by OMIM]

**Other Designations**

-

## Pathway

- [Neurotrophin signaling pathway](#)