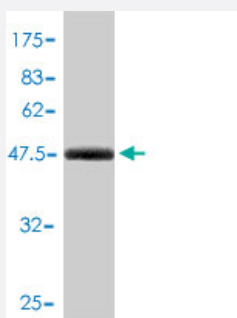


ARHGDIA polyclonal antibody (A01)

Catalog # H00000396-A01

Size 50 uL

Applications



Western Blot detection against Immunogen (48.55 KDa) .

Specification

Product Description	Mouse polyclonal antibody raised against a full-length recombinant ARHGDIA.
Immunogen	ARHGDIA (AAH16031, 1 a.a. ~ 204 a.a) full-length recombinant protein with GST tag.
Sequence	MAEQEPTAEQLAQIAAENEDEHSVNYKPPAQKSIQEIQLDKDDESLRKYKEALLGRVAVSADP NVPNVVVTGLTLCSSAPGPLELDTGDLSEFKKQSFVLKEGVEYRIKISFRVNREIVSGMKYIQT YRKGVKIDKTDYMGSYGPRAEYEFLLTPVEEAPKGMLARGSYSIKSRFTDDDKTDHLSWEWNLT IKKDWKD
Host	Mouse
Reactivity	Human
Quality Control Testing	Antibody Reactive Against Recombinant Protein. Western Blot detection against Immunogen (48.55 KDa) .
Storage Buffer	50 % glycerol
Storage Instruction	Store at -20°C or lower. Aliquot to avoid repeated freezing and thawing.

Applications

- Western Blot (Recombinant protein)

[Protocol Download](#)

- ELISA

Gene Info — ARHGDIA

Entrez GeneID [396](#)

GeneBank Accession# [BC016031](#)

Protein Accession# [AAH16031](#)

Gene Name ARHGDIA

Gene Alias GDIA1, MGC117248, RHOGDI, RHOGDI-1

Gene Description Rho GDP dissociation inhibitor (GDI) alpha

Omim ID [601925](#)

Gene Ontology [Hyperlink](#)

Gene Summary Aplysia Ras-related homologs (ARHs), also called Rho genes, belong to the RAS gene superfamily encoding small guanine nucleotide exchange (GTP/GDP) factors. The ARH proteins may be kept in the inactive, GDP-bound state by interaction with GDP dissociation inhibitors, such as ARHGDIA (Leffers et al., 1993 [PubMed 8262133]).[supplied by OMIM]

Other Designations -

Pathway

- [Neurotrophin signaling pathway](#)