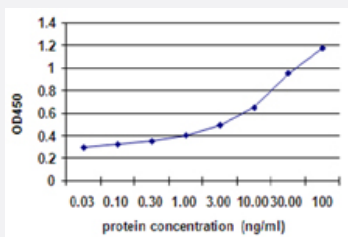


TRIM23 (Human) Matched Antibody Pair

Catalog # H00000373-AP41

Size 1 Set

Applications



Sandwich ELISA detection sensitivity ranging from 3 ng/ml to 100 ng/ml.

Specification

Product Description	This antibody pair set comes with a matched antibody pair to detect and quantify the protein level of human TRIM23.
Reactivity	Human
Quality Control Testing	Standard curve using recombinant protein (H00000373-P01L) as an analyte. Sandwich ELISA detection sensitivity ranging from 3 ng/ml to 100 ng/ml.
Supplied Product	Antibody pair set content: 1. Capture antibody: mouse monoclonal anti-TRIM23, IgG2b Kappa (100 ug) 2. Detection antibody: biotinylated mouse monoclonal anti-TRIM23, IgG1 Kappa (50 ug) *Reagents are sufficient for at least 3-5 x 96 well plates using recommended protocols.
Storage Instruction	Store reagents of the antibody pair set at -20°C or lower. Please aliquot to avoid repeated freeze thaw cycle. Reagents should be returned to -20°C storage immediately after use.

Applications

- ELISA Pair (Recombinant protein)

[Protocol Download](#)

Gene Info — TRIM23

Entrez GeneID [373](#)

Gene Name TRIM23

Gene Alias ARD1, ARFD1, RNF46

Gene Description tripartite motif-containing 23

Omim ID [601747](#)

Gene Ontology [Hyperlink](#)

Gene Summary

The protein encoded by this gene is a member of the tripartite motif (TRIM) family. The TRIM motif includes three zinc-binding domains, a RING, a B-box type 1 and a B-box type 2, and a coiled-coil region. This protein is also a member of the ADP ribosylation factor family of guanine nucleotide-binding family of proteins. Its carboxy terminus contains an ADP-ribosylation factor domain and a guanine nucleotide binding site, while the amino terminus contains a GTPase activating protein domain which acts on the guanine nucleotide binding site. The protein localizes to lysosomes and the Golgi apparatus. It plays a role in the formation of intracellular transport vesicles, their movement from one compartment to another, and phospholipase D activation. Three alternatively spliced transcript variants for this gene have been described. [provided by RefSeq]

Other Designations

ADP-ribosylation factor domain protein 1|ADP-ribosylation factor domain protein 1, 64kDa|ARF domain protein 1|GTP-binding protein ARD-1|OTTHUMP00000123453|tripartite motif protein TRIM23