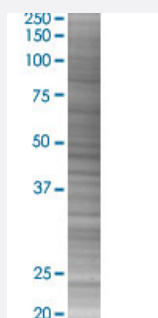


# SLC25A6 293T Cell Transient Overexpression Lysate(Denatured)

Catalog # H00000293-T02

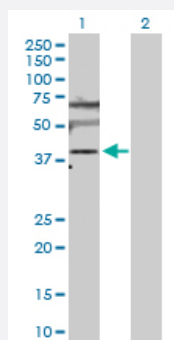
Size 100 uL

## Applications



### SDS-PAGE Gel

SLC25A6 transfected lysate.



### Western Blot

Lane 1: SLC25A6 transfected lysate ( 32.90 KDa)

Lane 2: Non-transfected lysate.

## Specification

**Transfected Cell Line** 293T

**Plasmid** pCMV-SLC25A6 full-length

**Host** Human

**Theoretical MW (kDa)** 32.9

**Quality Control Testing** Transient overexpression cell lysate was tested with Anti-SLC25A6 antibody ([H00000293-D01P](#)) by Western Blots.  
SDS-PAGE Gel  
SLC25A6 transfected lysate.  
Western Blot  
Lane 1: SLC25A6 transfected lysate ( 32.90 KDa)  
Lane 2: Non-transfected lysate.

**Storage Buffer**

1X Sample Buffer (50 mM Tris-HCl, 2% SDS, 10% glycerol, 300 mM 2-mercaptoethanol, 0.01% Bromophenol blue)

**Storage Instruction**

Store at -80°C. Aliquot to avoid repeated freezing and thawing.

## Applications

- Western Blot

## Gene Info — SLC25A6

**Entrez GeneID**[293](#)**GeneBank Accession#**[NM\\_001636.1](#)**Protein Accession#**[AAH14775.1](#)**Gene Name**

SLC25A6

**Gene Alias**

AAC3, ANT3, ANT3Y, MGC17525

**Gene Description**

solute carrier family 25 (mitochondrial carrier; adenine nucleotide translocator), member 6

**Omim ID**[300151 403000](#)**Gene Ontology**[Hyperlink](#)**Gene Summary**

This gene is a member of the mitochondrial carrier subfamily of solute carrier protein genes. The product of this gene functions as a gated pore that translocates ADP from the mitochondrial matrix into the cytoplasm. The protein is implicated in the function of the permeability transition pore complex (PTPC), which regulates the release of mitochondrial products that induce apoptosis. The human genome contains several non-transcribed pseudogenes of this gene. [provided by RefSeq]

**Other Designations**

ADP,ATP carrier protein, liver|ADP/ATP translocase 3|ADP/ATP translocator of liver|OTTHUMP0000022826|adenine nucleotide translocator 3|solute carrier family 25, member A6

## Pathway

- [Calcium signaling pathway](#)