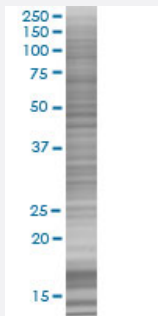


# SLC25A5 293T Cell Transient Overexpression Lysate(Denatured)

Catalog # H00000292-T02

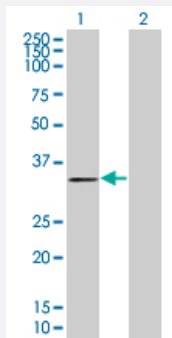
Size 100 uL

## Applications



### SDS-PAGE Gel

SLC25A5 transfected lysate.



### Western Blot

Lane 1: SLC25A5 transfected lysate ( 32.89 KDa)

Lane 2: Non-transfected lysate.

## Specification

Transfected Cell Line	293T
Plasmid	pCMV-SLC25A5 full-length
Host	Human
Theoretical MW (kDa)	32.89
Interspecies Antigen Sequence	Mouse (99); Rat (99)

## Quality Control Testing

Transient overexpression cell lysate was tested with Anti-SLC25A5 antibody ([H00000292-B02](#)) by Western Blots.  
SDS-PAGE Gel  
SLC25A5 transfected lysate.  
Western Blot  
Lane 1: SLC25A5 transfected lysate ( 32.89 KDa)  
Lane 2: Non-transfected lysate.

## Storage Buffer

1X Sample Buffer (50 mM Tris-HCl, 2% SDS, 10% glycerol, 300 mM 2-mercaptoethanol, 0.01% Bromophenol blue)

## Storage Instruction

Store at -80°C. Aliquot to avoid repeated freezing and thawing.

## Applications

- Western Blot

## Gene Info — SLC25A5

## Entrez GeneID

[292](#)

## GeneBank Accession#

[NM\\_001152](#)

## Protein Accession#

[NP\\_001143](#)

## Gene Name

SLC25A5

## Gene Alias

2F1, AAC2, ANT2, T2, T3

## Gene Description

solute carrier family 25 (mitochondrial carrier; adenine nucleotide translocator), member 5

## Omim ID

[300150](#)

## Gene Ontology

[Hyperlink](#)

## Gene Summary

This gene is a member of the mitochondrial carrier subfamily of solute carrier protein genes. The product of this gene functions as a gated pore that translocates ADP from the mitochondrial matrix into the cytoplasm. The protein forms a homodimer embedded in the inner mitochondrial membrane. Suppressed expression of this gene has been shown to induce apoptosis and inhibit tumor growth. The human genome contains several non-transcribed pseudogenes of this gene

## Other Designations

OTTHUMP00000024324|adenine nucleotide translocator 2 (fibroblast)|solute carrier family 25, member 5

## Pathway

- [Calcium signaling pathway](#)