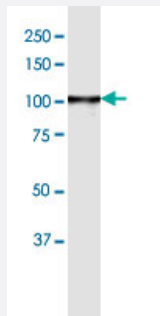


AMPD2 (Human) IP-WB Antibody Pair

Catalog # H00000271-PW2

Size 1 Set

Applications



Immunoprecipitation of AMPD2 transfected lysate using rabbit polyclonal anti-AMPD2 and Protein A Magnetic Bead ([U0007](#)), and immunoblotted with mouse purified polyclonal anti-AMPD2.

Specification

Product Description	This IP-WB antibody pair set comes with one antibody for immunoprecipitation and another to detect the precipitated protein in western blot.
Reactivity	Human
Quality Control Testing	Immunoprecipitation-Western Blot (IP-WB) Immunoprecipitation of AMPD2 transfected lysate using rabbit polyclonal anti-AMPD2 and Protein A Magnetic Bead (U0007), and immunoblotted with mouse purified polyclonal anti-AMPD2.
Supplied Product	Antibody pair set content: 1. Antibody pair for IP: rabbit polyclonal anti-AMPD2 (300 ul) 2. Antibody pair for WB: mouse purified polyclonal anti-AMPD2 (50 ug)
Storage Instruction	Store reagents of the antibody pair set at -20°C or lower. Please aliquot to avoid repeated freeze thaw cycle. Reagents should be returned to -20°C storage immediately after use.

Applications

- Immunoprecipitation-Western Blot

[Protocol Download](#)

Gene Info — AMPD2

Entrez GeneID	271
Gene Name	AMPD2
Gene Alias	-
Gene Description	adenosine monophosphate deaminase 2 (isoform L)
Omim ID	102771
Gene Ontology	Hyperlink
Gene Summary	Adenosine monophosphate deaminase-2 (EC 3.5.4.6) catalyzes the deamination of AMP to IMP and plays an important role in the purine nucleotide cycle.[supplied by OMIM]
Other Designations	AMP deaminase 2 OTTHUMP00000013369 OTTHUMP00000013371

Pathway

- [Biosynthesis of plant hormones](#)
- [Metabolic pathways](#)
- [Purine metabolism](#)

Disease

- [Atherosclerosis](#)
- [Calcinosis](#)
- [Coronary Artery Disease](#)