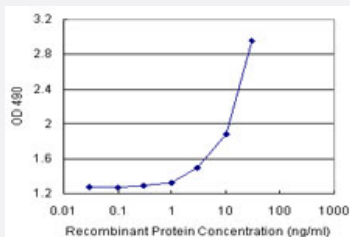


# AMBP (Human) Matched Antibody Pair

Catalog # H00000259-AP21      Size 1 Set

## Applications



Sandwich ELISA detection sensitivity ranging from 1 ng/ml to 100 ng/ml.

## Specification

<b>Product Description</b>	This antibody pair set comes with a matched antibody pair to detect and quantify the protein level of human AMBP.
<b>Reactivity</b>	Human
<b>Quality Control Testing</b>	Standard curve using recombinant protein ( H00000259-P01 ) as an analyte. Sandwich ELISA detection sensitivity ranging from 1 ng/ml to 100 ng/ml.
<b>Supplied Product</b>	Antibody pair set content: 1. Capture antibody: rabbit MaxPab® affinity purified polyclonal anti-AMBP (100 ug) 2. Detection antibody: mouse purified polyclonal anti-AMBP (20 ug) *Reagents are sufficient for at least 1-2 x 96 well plates using recommended protocols.
<b>Storage Instruction</b>	Store reagents of the antibody pair set at -20°C or lower. Please aliquot to avoid repeated freeze thaw cycle. Reagents should be returned to -20°C storage immediately after use.

## Applications

- ELISA Pair (Recombinant protein)

[Protocol Download](#)

## Gene Info — AMBP

**Entrez GeneID** [259](#)**Gene Name** AMBP**Gene Alias** EDC1, HCP, HI30, IATIL, ITI, ITIL, ITILC, UTI**Gene Description** alpha-1-microglobulin/bikunin precursor**Omim ID** [176870](#)**Gene Ontology** [Hyperlink](#)

**Gene Summary** This gene encodes a complex glycoprotein secreted in plasma. The precursor is proteolytically processed into distinct functioning proteins: alpha-1-microglobulin, which belongs to the superfamily of lipocalin transport proteins and may play a role in the regulation of inflammatory processes, and bikunin, which is a urinary trypsin inhibitor belonging to the superfamily of Kunitz-type protease inhibitors and plays an important role in many physiological and pathological processes. This gene is located on chromosome 9 in a cluster of lipocalin genes. [provided by RefSeq]

**Other Designations** OTTHUMP00000021967|OTTHUMP00000063975|alpha-1-microglobulin/bikunin|bikunin|complex-forming glycoprotein heterogeneous in charge|growth-inhibiting protein 19|inter-alpha-trypsin inhibitor light chain|protein HC|trypstatin|uristatin|uronic-acid-rich protei

## Disease

- [Cardiovascular Diseases](#)
- [Diabetes Mellitus](#)
- [Edema](#)
- [Kidney Calculi](#)