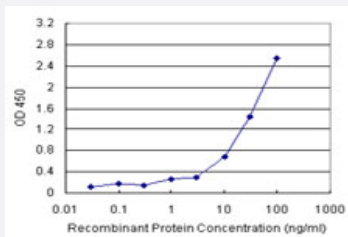


ALB (Human) Matched Antibody Pair

Catalog # H00000213-AP11 Size 1 Set

Applications



Sandwich ELISA detection sensitivity ranging from 10 ng/ml to 100 ng/ml.

Specification

Product Description	This antibody pair set comes with a matched antibody pair to detect and quantify the protein level of human ALB.
Reactivity	Human
Quality Control Testing	Standard curve using recombinant protein (H00000213-P01) as an analyte. Sandwich ELISA detection sensitivity ranging from 10 ng/ml to 100 ng/ml.
Supplied Product	Antibody pair set content: 1. Capture antibody: rabbit MaxPab® affinity purified polyclonal anti-ALB (100 ug) 2. Detection antibody: mouse monoclonal anti-ALB, IgG1 Kappa (20 ug) *Reagents are sufficient for at least 1-2 x 96 well plates using recommended protocols.
Storage Instruction	Store reagents of the antibody pair set at -20°C or lower. Please aliquot to avoid repeated freeze thaw cycle. Reagents should be returned to -20°C storage immediately after use.

Applications

- ELISA Pair (Recombinant protein)

[Protocol Download](#)

Gene Info — ALB

Entrez GeneID	213
Gene Name	ALB
Gene Alias	DKFZp779N1935, PRO0883, PRO0903, PRO1341
Gene Description	albumin
Omim ID	103600 194470
Gene Ontology	Hyperlink
Gene Summary	<p>Albumin is a soluble, monomeric protein which comprises about one-half of the blood serum protein. Albumin functions primarily as a carrier protein for steroids, fatty acids, and thyroid hormones and plays a role in stabilizing extracellular fluid volume. Albumin is a globular unglycosylated serum protein of molecular weight 65,000. Albumin is synthesized in the liver as preproalbumin which has an N-terminal peptide that is removed before the nascent protein is released from the rough endoplasmic reticulum. The product, proalbumin, is in turn cleaved in the Golgi vesicles to produce the secreted albumin. [provided by RefSeq]</p>
Other Designations	cell growth inhibiting protein 42 growth-inhibiting protein 20 serum albumin

Disease

- [Alzheimer disease](#)
- [Diabetes Mellitus](#)
- [Hepatitis](#)