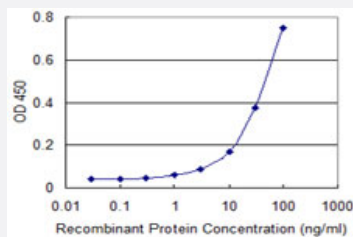


AK1 monoclonal antibody (M01), clone 3G8-1B11

Catalog # H00000203-M01

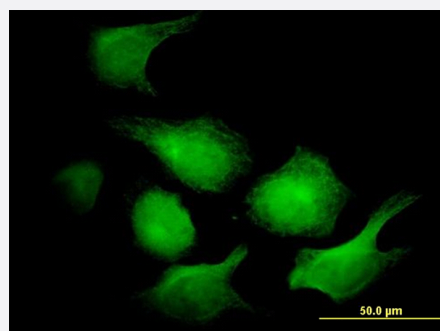
Size 100 ug

Applications



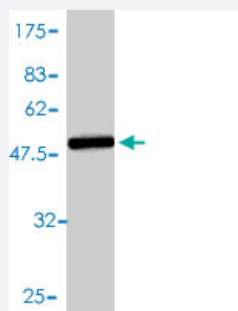
Sandwich ELISA (Recombinant protein)

Detection limit for recombinant GST tagged AK1 is approximately 10ng/ml as a capture antibody.



Immunofluorescence

Immunofluorescence of monoclonal antibody to AK1 on HeLa cell. [antibody concentration 10 ug/ml]



Western Blot detection against Immunogen (47.08 KDa) .

Specification

Product Description

Mouse monoclonal antibody raised against a full length recombinant AK1.

Immunogen	AK1 (AAH01116, 1 a.a. ~ 194 a.a) full-length recombinant protein with GST tag. MW of the GST tag alone is 26 KDa.
Sequence	MEEKLKKTNIIFVVGPGSGKGTQCEKMQKYGYTHLSTGDLLRSEVSSGSARGKKLSEIMEKGQL VPLETVLDMLRDAMVAKVNTSKGFLIDGYPREVQQGEFERRIGQPTLLLYVDAGPETMTQRLLK RGETSGRVDDNEETIKRLETTYKATEPVIAFYEKRGIVRKVNAEGSVDSVFSQVCTHLDALK
Host	Mouse
Reactivity	Human
Interspecies Antigen Sequence	Mouse (88); Rat (90)
Isotype	IgG1 Kappa
Quality Control Testing	Antibody Reactive Against Recombinant Protein. Western Blot detection against Immunogen (47.08 KDa) .
Storage Buffer	In 1x PBS, pH 7.4
Storage Instruction	Store at -20°C or lower. Aliquot to avoid repeated freezing and thawing.

Applications

- Western Blot (Recombinant protein)

[Protocol Download](#)

- Sandwich ELISA (Recombinant protein)

Detection limit for recombinant GST tagged AK1 is approximately 10ng/ml as a capture antibody.

[Protocol Download](#)

- ELISA

- Immunofluorescence

Immunofluorescence of monoclonal antibody to AK1 on HeLa cell. [antibody concentration 10 ug/ml]

Gene Info — AK1

Entrez GeneID [203](#)

GeneBank Accession# [BC001116](#)

Protein Accession#	AAH01116
Gene Name	AK1
Gene Alias	-
Gene Description	adenylate kinase 1
Omim ID	103000
Gene Ontology	Hyperlink
Gene Summary	<p>Adenylate kinase is an enzyme involved in regulating the adenine nucleotide composition within a cell by catalyzing the reversible transfer of phosphate group among adinine nucleotides. Three isozymes of adenylate kinase have been identified in vertebrates, adenylate isozyme 1 (AK1), 2 (AK2) and 3 (AK3). AK1 is found in the cytosol of skeletal muscle, brain and erythrocytes, whereas A K2 and AK3 are found in the mitochondria of other tissues including liver and heart. AK1 was identified because of its association with a rare genetic disorder causing nonspherocytic hemolytic anemia where a mutation in the AK1 gene was found to reduce the catalytic activity of the enzyme. [provided by RefSeq</p>
Other Designations	ATP-AMP transphosphorylase OTTHUMP00000022217 OTTHUMP00000022218 myokinase

Pathway

- [Metabolic pathways](#)
- [Purine metabolism](#)

Disease

- [Fetal Growth Retardation](#)