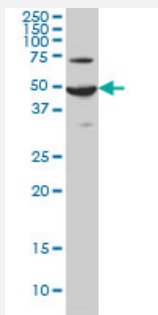


# ADCYAP1R1 monoclonal antibody (M01), clone 2B12

Catalog # H00000117-M01

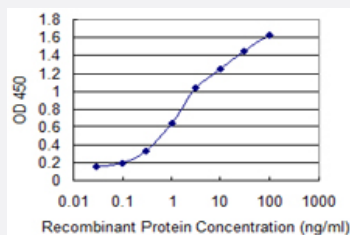
Size 100 ug

## Applications



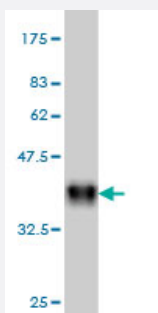
### Western Blot (Cell lysate)

ADCYAP1R1 monoclonal antibody (M01), clone 2B12 Western Blot analysis of ADCYAP1R1 expression in HeLa ( Cat # L013V1 ).



### Sandwich ELISA (Recombinant protein)

Detection limit for recombinant GST tagged ADCYAP1R1 is 0.03 ng/ml as a capture antibody.



Western Blot detection against Immunogen (36.74 KDa) .

## Specification

### Product Description

Mouse monoclonal antibody raised against a partial recombinant ADCYAP1R1.

<b>Immunogen</b>	ADCYAP1R1 (NP_001109, 21 a.a. ~ 120 a.a) partial recombinant protein with GST tag. MW of the GST tag alone is 26 KDa.
<b>Sequence</b>	MHSDCIFKKEQAMCLEKIQRANELMGFNDSSPGCPGMWDNITCWKPAHV GEMVLVSCPELFRIF NPDQVWETETIGESDFGDSNSLDLSDMGVVSRNCTE
<b>Host</b>	Mouse
<b>Reactivity</b>	Human
<b>Interspecies Antigen Sequence</b>	Mouse (85); Rat (86)
<b>Isotype</b>	IgG1 Kappa
<b>Quality Control Testing</b>	Antibody Reactive Against Recombinant Protein. Western Blot detection against Immunogen (36.74 KDa) .
<b>Storage Buffer</b>	In 1x PBS, pH 7.4
<b>Storage Instruction</b>	Store at -20°C or lower. Aliquot to avoid repeated freezing and thawing.

## Applications

- Western Blot (Cell lysate)

ADCYAP1R1 monoclonal antibody (M01), clone 2B12 Western Blot analysis of ADCYAP1R1 expression in HeLa ( Cat # L013V1 ).

[Protocol Download](#)

- Western Blot (Recombinant protein)

[Protocol Download](#)

- Sandwich ELISA (Recombinant protein)

Detection limit for recombinant GST tagged ADCYAP1R1 is 0.03 ng/ml as a capture antibody.

[Protocol Download](#)

- ELISA

## Gene Info — ADCYAP1R1

Entrez GeneID

[117](#)

GeneBank Accession#	<a href="#">NM_001118</a>
Protein Accession#	<a href="#">NP_001109</a>
Gene Name	ADCYAP1R1
Gene Alias	PAC1, PACAPR, PACAPRI
Gene Description	adenylate cyclase activating polypeptide 1 (pituitary) receptor type I
Omim ID	<a href="#">102981</a>
Gene Ontology	<a href="#">Hyperlink</a>
Gene Summary	<p>This gene encodes type I adenylate cyclase activating polypeptide receptor, which is a membrane-associated protein and shares significant homology with members of the glucagon/secretin receptor family. This receptor mediates diverse biological actions of adenylate cyclase activating polypeptide 1 and is positively coupled to adenylate cyclase. Alternative splicing of two exons of this gene generates four major splice variants, but their full-length nature has not been determined. [provided by RefSeq]</p>
Other Designations	OTTHUMP00000025502 OTTHUMP00000123435 adenylate cyclase activating polypeptide 1 (pituitary) receptor type 1 pituitary adenylate cyclase activating polypeptide 1 receptor type I Hiphop

## Pathway

- [Neuroactive ligand-receptor interaction](#)

## Disease

- [Asthma](#)
- [Genetic Predisposition to Disease](#)
- [Mental Disorders](#)