

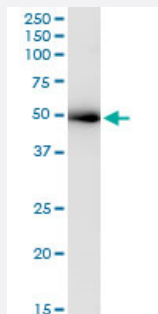
MaxPab®

ACTL6A MaxPab rabbit polyclonal antibody (D01)

Catalog # H00000086-D01

Size 100 uL

Applications



Immunoprecipitation

Immunoprecipitation of ACTL6A transfected lysate using anti-ACTL6A MaxPab rabbit polyclonal antibody and Protein A Magnetic Bead, and immunoblotted with ACTL6A monoclonal antibody (M10), clone 3C4 ([H00000086-M10](#)).

Specification

Product Description	Rabbit polyclonal antibody raised against a full-length human ACTL6A protein.
Immunogen	ACTL6A (NP_004292.1, 1 a.a. ~ 429 a.a) full-length human protein.
Sequence	MSGGVYGGDEVGALVFDIGSYTVRAGYAGEDCPKVDFPTAIGMVVERDDGSTLMEIDGDKGKQG GPTYIDTNALRVPRENMEAISPLKNGMVEDWDSFQAILDHTYKMHVKSEASLHPVLMSEAPWNT RAKREKLTLMFEHYNIPAFFLCKTAVLTAFANGRSTGLILDGATHHTAIPVHDGYVLQQGNVKSPL AGDFITMQCRELFQEMNIELVPPYMIASKEAVREGSPANWKRKEKLPQVTRSWHNYMCNCVIQD FQASVLQVSDSTYDEQVAAQMPTVHYEFPNGYNCDFGAERLKIPEGLFDPSNVKGLSGNTMLGV SHVVTTSVGMCDIDIRPGLYGSVIVAGGNTLIQSFTDRLNRELSQKTPPSMRLKLIANNTTVERRF SWIGGSILASLGTFFQMWISKQEYEEGGKQCVERKCP
Host	Rabbit
Reactivity	Human
Interspecies Antigen Sequence	Mouse (99); Rat (99)
Quality Control Testing	Antibody reactive against mammalian transfected lysate.
Storage Buffer	No additive

Storage Instruction

Store at -20°C or lower. Aliquot to avoid repeated freezing and thawing.

Applications

- Immunoprecipitation

Immunoprecipitation of ACTL6A transfected lysate using anti-ACTL6A MaxPab rabbit polyclonal antibody and Protein A Magnetic Bead, and immunoblotted with ACTL6A monoclonal antibody (M10), clone 3C4 ([H00000086-M10](#)).

[Protocol Download](#)

Gene Info — ACTL6A

Entrez GeneID [86](#)

GeneBank Accession# [NM_004301.3](#)

Protein Accession# [NP_004292.1](#)

Gene Name ACTL6A

Gene Alias ACTL6, ARPN-BETA, Arp4, BAF53A, INO80K, MGC5382

Gene Description actin-like 6A

Omim ID [604958](#)

Gene Ontology [Hyperlink](#)

Gene Summary This gene encodes a family member of actin-related proteins (ARPs), which share significant amino acid sequence identity to conventional actins. Both actins and ARPs have an actin fold, which is an ATP-binding cleft, as a common feature. The ARPs are involved in diverse cellular processes, including vesicular transport, spindle orientation, nuclear migration and chromatin remodeling. This gene encodes a 53 kDa subunit protein of the BAF (BRG1/brm-associated factor) complex in mammals, which is functionally related to SWI/SNF complex in *S. cerevisiae* and *Drosophila*; the latter is thought to facilitate transcriptional activation of specific genes by antagonizing chromatin-mediated transcriptional repression. Together with beta-actin, it is required for maximal ATPase activity of BRG1, and for the association of the BAF complex with chromatin/matrix. Three transcript variants that encode two different protein isoforms have been described. [provided by RefSeq]

Other Designations BAF complex 53 kDa subunit|BAF53|BRG1-associated factor|INO80 complex subunit K|actin-related protein 4|hArpN beta