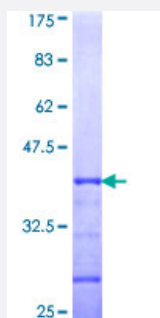


# ABCA2 (Human) Recombinant Protein (Q01)

Catalog # H00000020-Q01

Size 25 ug, 10 ug

## Applications



## Specification

|                                      |  |
|--------------------------------------|--|
| <b>Product Description</b>           | Human ABCA2 partial ORF ( NP_001597, 76 a.a. - 174 a.a.) recombinant protein with GST-tag at N-terminal. |
| <b>Sequence</b>                      | PDGQRDEFGFLQYANSTVTQLLERLDRVVEEGNLFDPARPSLGSELEALRQHLEALSAGPGTSG<br>SHLDRSTVSSFSLDSVARNPQELWRFLTQNLSLPN  |
| <b>Host</b>                          | Wheat Germ (in vitro)  |
| <b>Theoretical MW (kDa)</b>          | 36.63  |
| <b>Interspecies Antigen Sequence</b> | Mouse (86); Rat (84)   |
| <b>Preparation Method</b>            | <a href="#">in vitro wheat germ expression system</a>  |
| <b>Purification</b>                  | Glutathione Sepharose 4 Fast Flow  |
| <b>Quality Control Testing</b>       | 12.5% SDS-PAGE Stained with Coomassie Blue.  |
| <b>Storage Buffer</b>                | 50 mM Tris-HCl, 10 mM reduced Glutathione, pH=8.0 in the elution buffer.                                 |
| <b>Storage Instruction</b>           | Store at -80°C. Aliquot to avoid repeated freezing and thawing.  |
| <b>Note</b>                          | Best use within three months from the date of receipt of this protein.                                   |

## Applications

- Enzyme-linked Immunoabsorbent Assay
- Western Blot (Recombinant protein)
- Antibody Production
- Protein Array

## Gene Info — ABCA2

Entrez GeneID [20](#)

GeneBank Accession# [NM\\_001606](#)

Protein Accession# [NP\\_001597](#)

Gene Name ABCA2

Gene Alias ABC2, MGC129761

Gene Description ATP-binding cassette, sub-family A (ABC1), member 2

Omim ID [600047](#)

Gene Ontology [Hyperlink](#)

**Gene Summary** The membrane-associated protein encoded by this gene is a member of the superfamily of ATP-binding cassette (ABC) transporters. ABC proteins transport various molecules across extra- and intracellular membranes. ABC genes are divided into seven distinct subfamilies (ABC1, MDR/TA P, MRP, ALD, OABP, GCN20, White). This protein is a member of the ABC1 subfamily. Members of the ABC1 subfamily comprise the only major ABC subfamily found exclusively in multicellular eukaryotes. This protein is highly expressed in brain tissue and may play a role in macrophage lipid metabolism and neural development. Two transcript variants encoding different isoforms have been found for this gene. [provided by RefSeq]

**Other Designations** ATP-binding cassette, sub-family A, member 2|OTTHUMP00000064733

## Pathway

- [ABC transporters](#)
- [Lysosome](#)

## Disease

- [Alzheimer disease](#)
- [Cardiovascular Diseases](#)
- [Dementia](#)
- [Diabetes Mellitus](#)
- [Edema](#)
- [Genetic Predisposition to Disease](#)