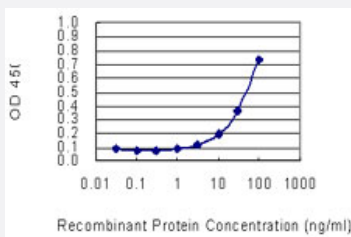


SOCS2 monoclonal antibody (M01), clone 3E7

Catalog # H00008835-M01

Size 100 ug

Applications



Sandwich ELISA (Recombinant protein)

Detection limit for recombinant GST tagged SOCS2 is 1 ng/ml as a capture antibody.

Specification

| | |
|--------------------------------------|--|
| Product Description | Mouse monoclonal antibody raised against a partial recombinant SOCS2. |
| Immunogen | SOCS2 (AAH10399, 99 a.a. ~ 198 a.a) partial recombinant protein with GST tag. MW of the GST tag alone is 26 KDa. |
| Sequence | YQDGKFRLDSIICVKSKLKQFDSVVHLIDYYVQMCKDKRTGPEAPRNGTVHLYLTKPLYTSAPSLQ HLCRLTINKCTGAMWGLPLPTRLKDYLEEYKFQV |
| Host | Mouse |
| Reactivity | Human |
| Interspecies Antigen Sequence | Mouse (93); Rat (93) |
| Isotype | IgG2a Kappa |
| Quality Control Testing | Antibody Reactive Against Recombinant Protein. |
| Storage Buffer | In 1x PBS, pH 7.4 |
| Storage Instruction | Store at -20°C or lower. Aliquot to avoid repeated freezing and thawing. |

Applications

- Sandwich ELISA (Recombinant protein)

Detection limit for recombinant GST tagged SOCS2 is 1 ng/ml as a capture antibody.

[Protocol Download](#)

- ELISA

Gene Info — SOCS2

| | |
|---------------------|--|
| Entrez GeneID | 8835 |
| GeneBank Accession# | BC010399 |
| Protein Accession# | AAH10399 |
| Gene Name | SOCS2 |
| Gene Alias | CIS2, Cish2, SOCS-2, SSI-2, SSI2, STAT2 |
| Gene Description | suppressor of cytokine signaling 2 |
| Omim ID | 605117 |
| Gene Ontology | Hyperlink |
| Gene Summary | This gene encodes a member of the STAT-induced STAT inhibitor (SSI), also known as suppressor of cytokine signaling (SOCS), family. SSI family members are cytokine-inducible negative regulators of cytokine signaling. The expression of this gene can be induced by a subset of cytokines, including erythropoietin, GM-CSF, IL10 and interferon (IFN)-gamma. The protein encoded by this gene is found to interact with the cytoplasmic domain of insulin-like growth factor-1 receptor (IGF1R), and thus is thought to be involved in the regulation of IGF1R mediated cell signaling. Knockout studies in mice also suggested a regulatory role of this gene in IGF-1 related growth control. [provided by RefSeq] |
| Other Designations | STAT induced STAT inhibitor-2 cytokine-inducible SH2 protein 2 suppressor of cytokine signaling -2 |

Pathway

- [Insulin signaling pathway](#)
- [Jak-STAT signaling pathway](#)

- [Type II diabetes mellitus](#)

Disease

- [Asthma](#)
- [Birth Weight](#)
- [Bronchiolitis](#)
- [Cardiovascular Diseases](#)
- [Diabetes Mellitus](#)
- [Edema](#)
- [Genetic Predisposition to Disease](#)
- [Glioblastoma](#)
- [Glioma](#)
- [Infant](#)
- [Leukemia](#)
- [Meningeal Neoplasms](#)
- [Meningioma](#)
- [Respiratory Syncytial Virus Infections](#)