

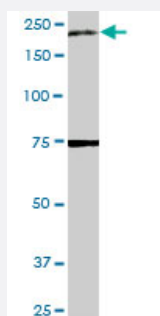
MaxPab®

A2M MaxPab rabbit polyclonal antibody (D01)

Catalog # H00000002-D01

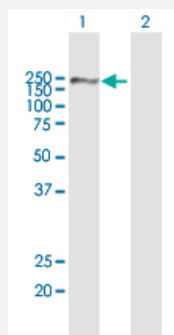
Size 100 uL

Applications



Western Blot (Tissue lysate)

A2M MaxPab rabbit polyclonal antibody. Western Blot analysis of A2M expression in human placenta.

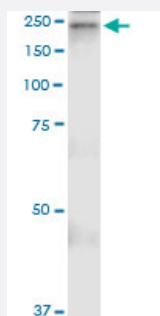


Western Blot (Transfected lysate)

Western Blot analysis of A2M expression in transfected 293T cell line ([H00000002-T01](#)) by A2M MaxPab polyclonal antibody.

Lane 1: A2M transfected lysate(163.30 KDa).

Lane 2: Non-transfected lysate.



Immunoprecipitation

Immunoprecipitation of A2M transfected lysate using anti-A2M MaxPab rabbit polyclonal antibody and Protein A Magnetic Bead, and immunoblotted with A2M purified MaxPab mouse polyclonal antibody (B01P) ([H00000002-B01P](#)).

Specification

Product Description

Rabbit polyclonal antibody raised against a full-length human A2M protein.

Immunogen	A2M (AAH40071.1, 1 a.a. ~ 1474 a.a) full-length human protein.
Sequence	<p>MGKNKLLHPSLVLLLLVLLPTDASVSGKPQYMLVPSLLHTETTEKGCVLLSYLNETVTVSASLES VRGNRSLFTDLEAENDVLHCVAFAVPKSSSNEEVMFLTVQVKGPTQEFKKRTTVMVKNEDSLVF VQTDKSMYKPGQTVKFRVVSMDENFHLNLIPLVYQDPKGNRIAQWQSFQLEGGLKQFSFPLSS EPFQGSYKVVVQKKSGGRTEHPFTVEEFVLPKFEVQVTVPKIITILEEEMNVSVCGLYTYGKPVPG HVTVSICRKYS DASDCHGEDSQAFCEKFSGQLNSHGCFYQQVKTKVFQLKRKEYEMKLHTEAQI QEEGTVVELTGRQSSEITRTITKLSFVKVDSHFRQGIPFFGQVRLVDGKGVPIPNKVIFIRGNEANY SNATTDEHGLVQFSINTTNVMGTSLTVRVNYKDRSPCYGYQWVSEEHEEAHHTAYLVFSPSKSFV HLEPMSHELPCGHTQTVQAHYILNGGTLGLKLSFYLLIMAKGGIVRTGTHGLLVKQEDMKGHFSI SIPVKSDIAPVARLLIYAVLPTGDVIGDSAKYDVENCLANKVDLSFSPSQSLPASHAHLRVTAAPQS VCALRAVDQSVLLMKPDAELSASSVYNLLPEKDLTGFPGLNDQDDEDCINRHNVYINGITYTPVS STNEKDMYSFLEDMGLKAF TNSKIRKPKMCPQLQQYEMHGPEGLRVGFYSDVMGRGHARLVH VEEPHTETVRKYFPETWMDLVVVNSAGVAEVGVTVPDTITTEWKAGAFCLSE DAGLGISSTASLR AFQPPFFVELTMPYSVIRGEAFTLKATVLNLYPKCIRVSVQLEASPAFLAVPVEKEQAPHICANGR QTVSWAVTPKSLGNVNFVSAEALSEQELCGTEVPSVPEHGRKDTVIKPLLVEPEGLEKETTENS LLCPSGGEVSEELSLKLPNVVEESARASVSVLGDILGSAMQNTQNLQMPYGCGEQNMVLFAP NIYVLDYLNQQLTPEVKS KAIGYLN TG YQRQLNYKH YDGSYSTFGERYGRNQGNTWLTAFVLKTF AQARAYIFIDEAHITQALWLSQRQKDNCFRSSGSLNNAIKGGVEDEVTL SAYITIALLEIPLTVTHP VVRNALFCLES AWKTAQEGDHGSHVYTKALLAYAFALAGNQDKRKEVLKSLNEEAVKKNDSVH WERPQPKAPVGHFYEPQAPSAEVE MTSYVLLAYLTAQPAPTS EDLTSATNMKWITKQNAQGG FSS TQDTVVALHALSKYGAATFTRTGKAAQVTIQSSGTFSSKFQVDNNRLLLQQVSLPELPG EY SMKVTGEGCVYLQTS LKYNILPEKEEFPFALGVQTLPTCDEPKAHTSFQISLSVSYTGSRASNM AMDVKM VSGFIPLKPTVKMLERSNHVSRTEVSSNHVLMYLDKVS NQTL SLFFTVLQDVPVRDLKP AIVKYDYETDEFAIAEYNAPCSKDLGNA</p>
Host	Rabbit
Reactivity	Human
Interspecies Antigen Sequence	Mouse (72); Rat (73)
Quality Control Testing	Antibody reactive against mammalian transfected lysate.
Storage Buffer	No additive
Storage Instruction	Store at -20°C or lower. Aliquot to avoid repeated freezing and thawing.

Applications

- Western Blot (Tissue lysate)

A2M MaxPab rabbit polyclonal antibody. Western Blot analysis of A2M expression in human placenta.

[Protocol Download](#)

- Western Blot (Transfected lysate)

Western Blot analysis of A2M expression in transfected 293T cell line ([H00000002-T01](#)) by A2M MaxPab polyclonal antibody.

Lane 1: A2M transfected lysate(163.30 KDa).

Lane 2: Non-transfected lysate.

[Protocol Download](#)

- Immunoprecipitation

Immunoprecipitation of A2M transfected lysate using anti-A2M MaxPab rabbit polyclonal antibody and Protein A Magnetic Bead, and immunoblotted with A2M purified MaxPab mouse polyclonal antibody (B01P) ([H00000002-B01P](#)).

[Protocol Download](#)

Gene Info — A2M

Entrez GeneID [2](#)

GeneBank Accession# [BC040071.1](#)

Protein Accession# [AAH40071.1](#)

Gene Name A2M

Gene Alias CPAMD5, DKFZp779B086, FWP007, S863-7

Gene Description alpha-2-macroglobulin

Omim ID [103950](#) [104300](#)

Gene Ontology [Hyperlink](#)

Gene Summary Alpha-2-macroglobulin is a protease inhibitor and cytokine transporter. It inhibits many proteases, including trypsin, thrombin and collagenase. A2M is implicated in Alzheimer disease (AD) due to its ability to mediate the clearance and degradation of A-beta, the major component of beta-amyloid deposits. [provided by RefSeq]

Other Designations -

Pathway

- [Complement and coagulation cascades](#)

Disease

- [Alzheimer disease](#)
- [Amyloidosis](#)
- [Arthritis](#)
- [Cardiovascular Diseases](#)
- [Cognition Disorders](#)
- [Dementia](#)
- [Diabetes Complications](#)
- [Diabetes Mellitus](#)
- [Disease Progression](#)
- [Diseases in Twins](#)
- [Edema](#)
- [Essential tremor](#)
- [Genetic Predisposition to Disease](#)
- [Hepatitis C](#)
- [Kidney Failure](#)
- [Liver Cirrhosis](#)
- [Macular Degeneration](#)
- [Memory Disorders](#)
- [Metabolic Syndrome X](#)
- [Multiple Sclerosis](#)
- [Myocardial Infarction](#)
- [Neoplasms](#)
- [Obesity](#)
- [Osteoporosis](#)

- [Parkinson disease](#)