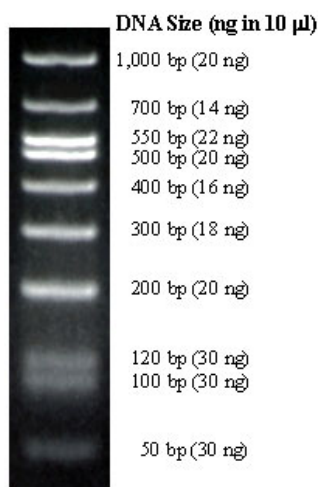


# DNA Marker Low

Catalog # D0001      Size

## Applications



## Specification

### Product Description

DNA Marker Low is useful for the determination of DNA fragments 50 bp to 1,000 bp in size. The DNA size marker consists of 10 double-stranded, blunt-end DNA fragments. The DNA bands close to each other, 550 bp and 500 bp, 120 bp and 100 bp, are for reference indicators. These DNA fragments were fixed amounts in the solution of DNA Marker Low, which makes it possible to estimate the amount of DNA. The DNA Marker Low is supplied in a ready-to-use mixture containing 8 mM EDTA, 8 % glycerol, 0.015 % bromphenol blue and 10 mM Tris-HCl (pH8.0).

### Quality Control Testing

DNA Marker Low is useful for determination of DNA fragments 50 bp to 1,000 bp in size. The DNA size marker consists of 10 double-stranded, blunt-end DNA fragments.

### Recommended Loading

5 to 10 µL/lane

### Recommend Usage

DNA sample: 5 µL  
6 X BPB loading dye: 1 µL (addition of 1/5 volume of DNA sample)  
Mix and load to a well

### Supplied Product

6 x BPB loading dye (EDTA, glycerol and bromphenol blue are contained)

### Storage Instruction

Store at 20-25°C. For long term storage, store at -20°C.

## Applications

- Polymerase Chain Reaction
- Electrophoresis