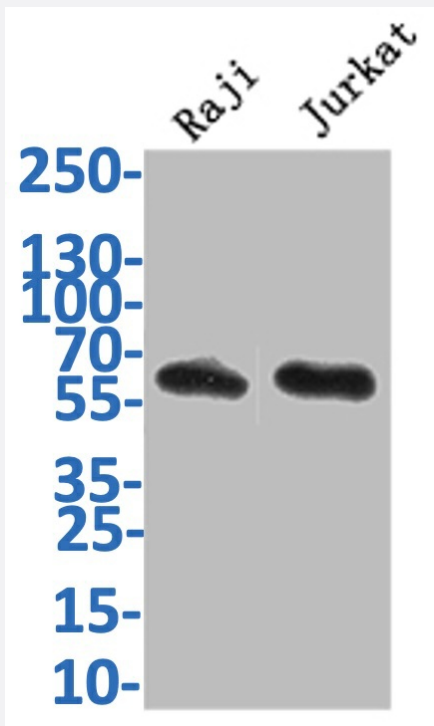


RecomAb™

CD19 recombinant monoclonal antibody, clone 27G9

Catalog # RAB07800 Size 100 uL

Applications



Western Blot

Western Blot analysis of Lane 1: Raji whole cell lysate; Lane 2: Jurkat whole cell lysate.

Specification

Product Description	Rabbit recombinant monoclonal antibody raised against human and mouse CD19.
Antibody Species	Rabbit
Immunogen	Original antibody is raised against a synthetic peptide corresponding to human CD19.
Theoretical MW (kDa)	Calculated MW: 62
Reactivity	Human, Mouse
Form	Liquid

Purification	Affinity chromatography purification
Isotype	IgG
Recommend Usage	ELISA Western Blot(1:500-1:2000) The optimal working dilution should be determined by the end user.
Storage Buffer	In PBS, pH7.4 (150 mM NaCl, 0.02% sodium azide and 50% glycerol)
Storage Instruction	Store at -20°C or -80°C. Aliquot to avoid repeated freezing and thawing.
Note	This product contains sodium azide: a POISONOUS AND HAZARDOUS SUBSTANCE which should be handled by trained staff only.

Applications

- Western Blot

Western Blot analysis of Lane 1: Raji whole cell lysate; Lane 2: Jurkat whole cell lysate.

- Enzyme-linked Immunoabsorbent Assay

Gene Info — CD19

Entrez GeneID	930
Protein Accession#	P15391
Gene Name	CD19
Gene Alias	B4, MGC12802
Gene Description	CD19 molecule
Omim ID	107265
Gene Ontology	Hyperlink
Gene Summary	Lymphocytes proliferate and differentiate in response to various concentrations of different antigens. The ability of the B cell to respond in a specific, yet sensitive manner to the various antigens is achieved with the use of low-affinity antigen receptors. This gene encodes a cell surface molecule which assembles with the antigen receptor of B lymphocytes in order to decrease the threshold for antigen receptor-dependent stimulation. [provided by RefSeq]

Other Designations

B-lymphocyte antigen CD19|CD19 antigen

Pathway

- [B cell receptor signaling pathway](#)
- [Hematopoietic cell lineage](#)
- [Primary immunodeficiency](#)

Disease

- [Arthritis](#)
- [Crohn Disease](#)
- [Genetic Predisposition to Disease](#)
- [Lupus Erythematosus](#)
- [Pemphigus](#)
- [Scleroderma](#)