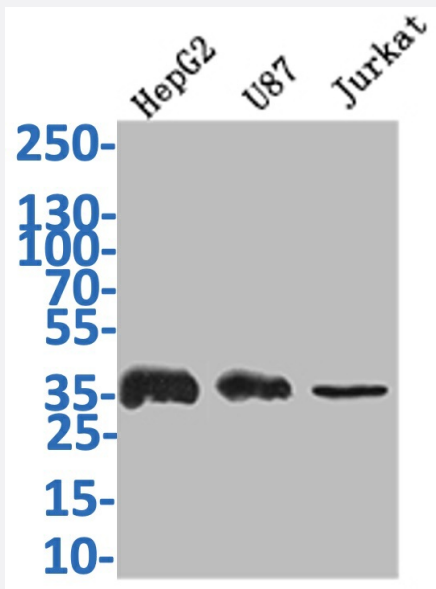


RecomAb™

GAPDH recombinant monoclonal antibody, clone 9B1

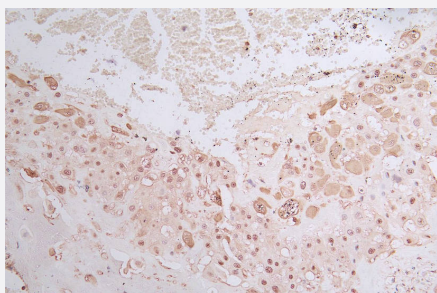
Catalog # RAB07794 Size 100 uL

Applications



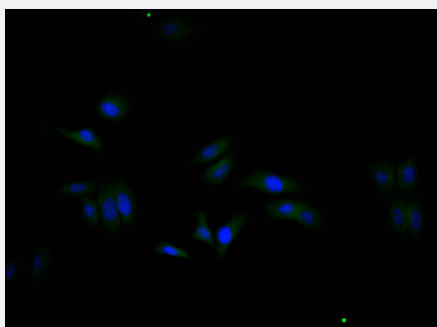
Western Blot

Western Blot analysis of Lane 1: HepG2 whole cell lysate; Lane 2: U87 whole tissue lysate; Lane 3: JK whole cell lysate.



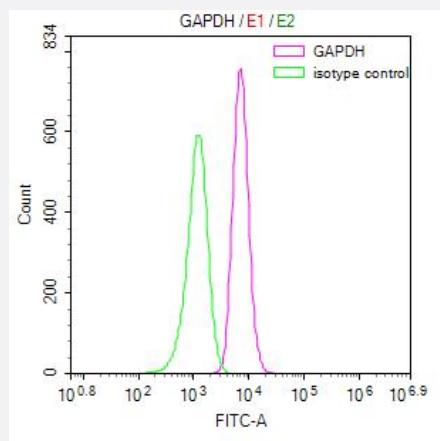
Immunohistochemistry

Immunohistochemistry image of GAPDH recombinant monoclonal antibody, clone 9B1 diluted at 1:50 and staining in paraffin-embedded human placenta tissue performed on a Leica Bond™ system.



Immunofluorescence

Immunofluorescence staining of HepG2 Cells with GAPDH recombinant monoclonal antibody, clone 9B1 at 1:20, counter-stained with DAPI.



Flow Cytometry

Overlay Peak curve showing HeLa cells stained with GAPDH recombinant monoclonal antibody, clone 9B1 (red line) at 1:50.

Specification

Product Description	Rabbit recombinant monoclonal antibody raised against human GAPDH.
Antibody Species	Rabbit
Immunogen	Original antibody is raised against a synthetic peptide corresponding to human GAPDH.
Theoretical MW (kDa)	Calculated MW: 36
Reactivity	Human
Form	Liquid
Purification	Affinity chromatography purification
Isotype	IgG
Recommend Usage	ELISA Flow Cytometry(1:50-1:200) Immunohistochemistry(1:50-1:200) Immunofluorescence(1:20-1:200) Western Blot(1:500-1:2000) The optimal working dilution should be determined by the end user.
Storage Buffer	In PBS, pH7.4 (150 mM NaCl, 0.02% sodium azide and 50% glycerol)
Storage Instruction	Store at -20°C or -80°C. Aliquot to avoid repeated freezing and thawing.
Note	This product contains sodium azide: a POISONOUS AND HAZARDOUS SUBSTANCE which should be handled by trained staff only.

Applications

- Western Blot

Western Blot analysis of Lane 1: HepG2 whole cell lysate; Lane 2: U87 whole tissue lysate; Lane 3: JK whole cell lysate.

- Immunohistochemistry

Immunohistochemistry image of GAPDH recombinant monoclonal antibody, clone 9B1 diluted at 1:50 and staining in paraffin-embedded human placenta tissue performed on a Leica BondTM system.

- Immunofluorescence

Immunofluorescence staining of HepG2 Cells with GAPDH recombinant monoclonal antibody, clone 9B1 at 1:20, counter-stained with DAPI.

- Enzyme-linked Immunoabsorbent Assay

- Flow Cytometry

Overlay Peak curve showing Hela cells stained with GAPDH recombinant monoclonal antibody, clone 9B1 (red line) at 1:50.

Gene Info — GAPDH

Entrez GeneID [2597](#)

Protein Accession# [P04406](#)

Gene Name GAPDH

Gene Alias G3PD, GAPD, MGC88685

Gene Description glyceraldehyde-3-phosphate dehydrogenase

Omim ID [138400](#)

Gene Ontology [Hyperlink](#)

Gene Summary The product of this gene catalyzes an important energy-yielding step in carbohydrate metabolism, the reversible oxidative phosphorylation of glyceraldehyde-3-phosphate in the presence of inorganic phosphate and nicotinamide adenine dinucleotide (NAD). The enzyme exists as a tetramer of identical chains. Many pseudogenes similar to this locus are present in the human genome. [provided by RefSeq]

Other Designations OTTHUMP00000174431|OTTHUMP00000174432|aging-associated gene 9 protein|glyceraldehyde 3-phosphate dehydrogenase

Pathway

- [Biosynthesis of alkaloids derived from histidine and purine](#)
- [Biosynthesis of alkaloids derived from ornithine](#)
- [Biosynthesis of alkaloids derived from shikimate pathway](#)
- [Biosynthesis of alkaloids derived from terpenoid and polyketide](#)
- [Biosynthesis of phenylpropanoids](#)
- [Biosynthesis of plant hormones](#)
- [Biosynthesis of terpenoids and steroids](#)
- [Glycolysis / Gluconeogenesis](#)
- [Metabolic pathways](#)

Disease

- [Alzheimer disease](#)
- [Cardiovascular Diseases](#)
- [Diabetes Complications](#)
- [Metabolic Syndrome X](#)
- [Neoplasms](#)
- [Nerve Degeneration](#)
- [Osteoporosis](#)