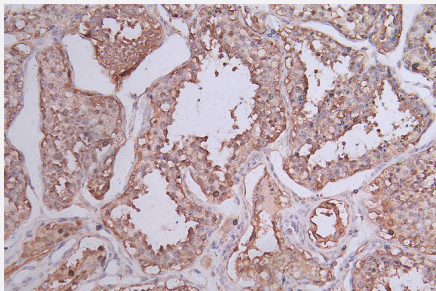


RecomAb™

HSP90AB1 recombinant monoclonal antibody, clone 7F4

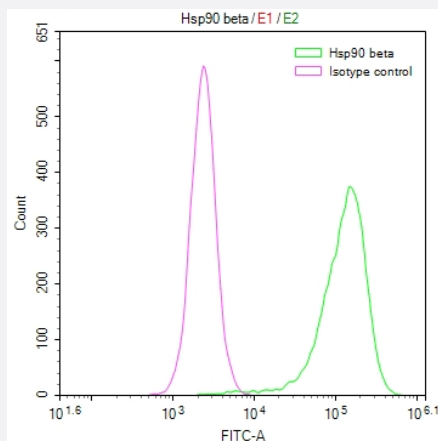
Catalog # RAB07780 Size 100 uL

Applications



Immunohistochemistry

Immunohistochemistry image of HSP90AB1 recombinant monoclonal antibody, clone 7F4 diluted at 1:50 and staining in paraffin-embedded human testis tissue performed on a Leica Bond™ system.



Flow Cytometry

Overlay Peak curve showing Hela cells stained with HSP90AB1 recombinant monoclonal antibody, clone 7F4 (red line) at 1:50.

Specification

Product Description	Rabbit recombinant monoclonal antibody raised against human HSP90AB1.
Antibody Species	Rabbit
Immunogen	Original antibody is raised against a synthetic peptide corresponding to human HSP90AB1.
Reactivity	Human
Form	Liquid

Purification	Affinity chromatography purification
Isotype	IgG
Recommend Usage	ELISA Flow Cytometry(1:50-1:200) Immunohistochemistry(1:50-1:200) The optimal working dilution should be determined by the end user.
Storage Buffer	In PBS, pH7.4 (150 mM NaCl, 0.02% sodium azide and 50% glycerol)
Storage Instruction	Store at -20°C or -80°C. Aliquot to avoid repeated freezing and thawing.
Note	This product contains sodium azide: a POISONOUS AND HAZARDOUS SUBSTANCE which should be handled by trained staff only.

Applications

- Immunohistochemistry

Immunohistochemistry image of HSP90AB1 recombinant monoclonal antibody, clone 7F4 diluted at 1:50 and staining in paraffin-embedded human testis tissue performed on a Leica Bond™ system.

- Enzyme-linked Immunoabsorbent Assay

- Flow Cytometry

Overlay Peak curve showing Hela cells stained with HSP90AB1 recombinant monoclonal antibody, clone 7F4 (red line) at 1:50.

Gene Info — HSP90AB1

Entrez GeneID	3326
Protein Accession#	P08238
Gene Name	HSP90AB1
Gene Alias	D6S182, FLJ26984, HSP90-BETA, HSP90B, HSPC2, HSPCB
Gene Description	heat shock protein 90kDa alpha (cytosolic), class B member 1
Omim ID	140572
Gene Ontology	Hyperlink

Gene Summary

HSP90 proteins are highly conserved molecular chaperones that have key roles in signal transduction, protein folding, protein degradation, and morphologic evolution. HSP90 proteins normally associate with other cochaperones and play important roles in folding newly synthesized proteins or stabilizing and refolding denatured proteins after stress. There are 2 major cytosolic HSP90 proteins, HSP90AA1 (MIM 140571), an inducible form, and HSP90AB1, a constitutive form. Other HSP90 proteins are found in endoplasmic reticulum (HSP90B1; MIM 191175) and mitochondria (TRAP1; MIM 606219) (Chen et al., 2005 [PubMed 16269234]).[supplied by OMIM]

Other Designations

OTTHUMP00000016517|OTTHUMP00000016518|OTTHUMP00000016519|OTTHUMP00000039869|heat shock 90kD protein 1, beta|heat shock 90kDa protein 1, beta|heat shock protein beta

Pathway

- [Antigen processing and presentation](#)
- [Pathways in cancer](#)
- [Prostate cancer](#)

Disease

- [Asthma](#)
- [Cardiovascular Diseases](#)
- [Diabetes Mellitus](#)
- [Edema](#)
- [Genetic Predisposition to Disease](#)
- [Hematologic Diseases](#)
- [Kidney Failure](#)
- [Occupational Diseases](#)