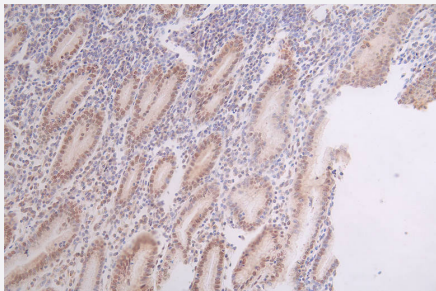


RecomAb™

DEK recombinant monoclonal antibody, clone 20D2

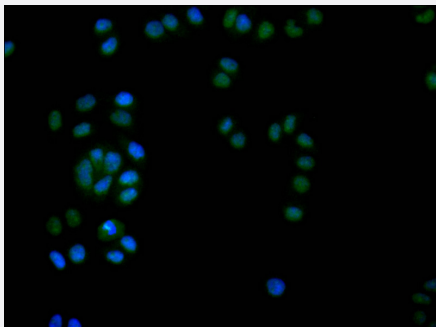
Catalog # RAB07771 Size 100 uL

Applications



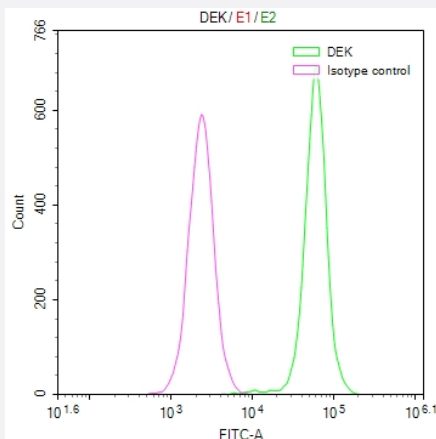
Immunohistochemistry

Immunohistochemistry image of DEK recombinant monoclonal antibody, clone 20D2 diluted at 1:50 and staining in paraffin-embedded human breast cancer performed on a Leica Bond™ system.



Immunofluorescence

Immunofluorescence staining of HeLa Cells with DEK recombinant monoclonal antibody, clone 20D2 at 1:20, counter-stained with DAPI.



Flow Cytometry

Overlay Peak curve showing HeLa cells stained with DEK recombinant monoclonal antibody, clone 20D2 (red line) at 1:50.

Specification

Product Description	Rabbit recombinant monoclonal antibody raised against human DEK.
Antibody Species	Rabbit
Immunogen	Original antibody is raised against a synthetic peptide corresponding to human DEK.
Reactivity	Human
Form	Liquid
Purification	Affinity chromatography purification
Isotype	IgG
Recommend Usage	ELISA Flow Cytometry(1:50-1:200) Immunohistochemistry(1:50-1:200) Immunofluorescence(1:20-1:200) The optimal working dilution should be determined by the end user.
Storage Buffer	In PBS, pH7.4 (150 mM NaCl, 0.02% sodium azide and 50% glycerol)
Storage Instruction	Store at -20°C or -80°C. Aliquot to avoid repeated freezing and thawing.
Note	This product contains sodium azide: a POISONOUS AND HAZARDOUS SUBSTANCE which should be handled by trained staff only.

Applications

- Immunohistochemistry

Immunohistochemistry image of DEK recombinant monoclonal antibody, clone 20D2 diluted at 1:50 and staining in paraffin-embedded human breast cancer performed on a Leica Bond™ system.

- Immunofluorescence

Immunofluorescence staining of Hela Cells with DEK recombinant monoclonal antibody, clone 20D2 at 1:20, counter-stained with DAPI.

- Enzyme-linked Immunoabsorbent Assay

- Flow Cytometry

Overlay Peak curve showing Hela cells stained with DEK recombinant monoclonal antibody, clone 20D2 (red line) at 1:50.

Gene Info — DEK

Entrez GeneID [7913](#)**Protein Accession#** [P35659](#)**Gene Name** DEK**Gene Alias** D6S231E**Gene Description** DEK oncogene**Omim ID** [125264](#)**Gene Ontology** [Hyperlink](#)

Gene Summary This gene encodes a protein with one SAP domain. This protein binds to cruciform and superhelical DNA and induces positive supercoils into closed circular DNA, and is also involved in splice site selection during mRNA processing. Chromosomal aberrations involving this region, increased expression of this gene, and the presence of antibodies against this protein are all associated with various diseases. Two transcript variants encoding different isoforms have been found for this gene. [provided by RefSeq]

Other Designations DEK oncogene (DNA binding)|OTTHUMP00000039357