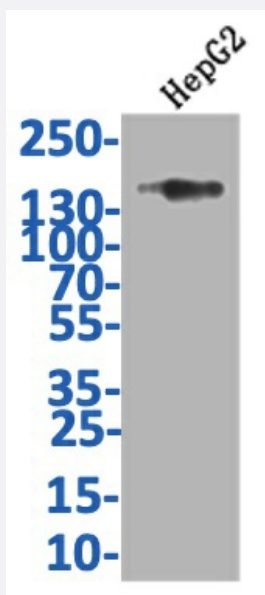


RecomAb™

# COL17A1 recombinant monoclonal antibody, clone 15G9

Catalog # RAB07767      Size 100 uL

## Applications



### Western Blot

Western Blot analysis of Lane 1: HepG2 whole cell lysate.

## Specification

Product Description	Rabbit recombinant monoclonal antibody raised against human COL17A1.
Antibody Species	Rabbit
Immunogen	Original antibody is raised against a synthetic peptide corresponding to human COL17A1.
Theoretical MW (kDa)	Calculated MW: 150
Reactivity	Human
Form	Liquid
Purification	Affinity chromatography purification
Isotype	IgG

Recommend Usage	ELISA Western Blot(1:500-1:2000) The optimal working dilution should be determined by the end user.
Storage Buffer	In PBS, pH7.4 (150 mM NaCl, 0.02% sodium azide and 50% glycerol)
Storage Instruction	Store at -20°C or -80°C. Aliquot to avoid repeated freezing and thawing.
Note	This product contains sodium azide: a POISONOUS AND HAZARDOUS SUBSTANCE which should be handled by trained staff only.

## Applications

- Western Blot

Western Blot analysis of Lane 1: HepG2 whole cell lysate.

- Enzyme-linked Immunoabsorbent Assay

## Gene Info — COL17A1

Entrez GeneID	<a href="#">1308</a>
Protein Accession#	<a href="#">Q9UMD9</a>
Gene Name	COL17A1
Gene Alias	BA16H23.2, BP180, BPAG2, FLJ60881, KIAA0204, LAD-1
Gene Description	collagen, type XVII, alpha 1
Omim ID	<a href="#">113811</a> <a href="#">226650</a>
Gene Ontology	<a href="#">Hyperlink</a>
Gene Summary	<p>This gene encodes the alpha chain of type XVII collagen. Unlike most collagens, collagen XVII is a transmembrane protein. Collagen XVII is a structural component of hemidesmosomes, multiprotein complexes at the dermal-epidermal basement membrane zone that mediate adhesion of keratinocytes to the underlying membrane. Mutations in this gene are associated with both generalized atrophic benign and junctional epidermolysis bullosa. Two homotrimeric forms of type XVII collagen exist. The full length form is the transmembrane protein. A soluble form, referred to as either ectodomain or LAD-1, is generated by proteolytic processing of the full length form. [provided by RefSeq]</p>
Other Designations	OTTHUMP00000020422 alpha 1 type XVII collagen BA16H23.2 (collagen, type XVII, alpha 1 (BP180)) bullous pemphigoid antigen 2 (180kD) collagen XVII, alpha-1 polypeptide

## Disease

- [Alzheimer Disease](#)
- [Chronic Disease](#)
- [Genetic Predisposition to Disease](#)
- [Pemphigoid](#)
- [Periodontitis](#)
- [Tobacco Use Disorder](#)