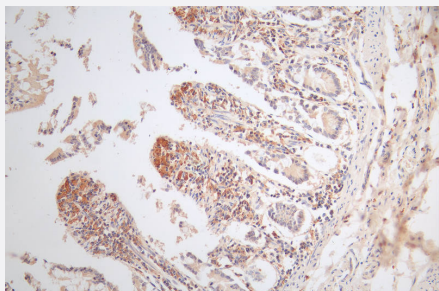


RecomAb™

# MICA recombinant monoclonal antibody, clone 9F1

Catalog # RAB07741      Size 100 uL

## Applications



### Immunohistochemistry

Immunohistochemistry image of MICA recombinant monoclonal antibody, clone 9F1 diluted at 1:80 and staining in paraffin-embedded human small intestine tissue performed on a Leica Bond™ system.

## Specification

<b>Product Description</b>	Rabbit recombinant monoclonal antibody raised against human MICA.
<b>Antibody Species</b>	Rabbit
<b>Immunogen</b>	Original antibody is raised against a synthetic peptide corresponding to human MICA.
<b>Reactivity</b>	Human
<b>Form</b>	Liquid
<b>Purification</b>	Affinity chromatography purification
<b>Isotype</b>	IgG
<b>Recommend Usage</b>	ELISA Immunohistochemistry(1:50-1:200) The optimal working dilution should be determined by the end user.
<b>Storage Buffer</b>	In PBS, pH7.4 (150 mM NaCl, 0.02% sodium azide and 50% glycerol)
<b>Storage Instruction</b>	Store at -20°C or -80°C. Aliquot to avoid repeated freezing and thawing.

**Note**

This product contains sodium azide: a POISONOUS AND HAZARDOUS SUBSTANCE which should be handled by trained staff only.

## Applications

- Immunohistochemistry

Immunohistochemistry image of MICA recombinant monoclonal antibody, clone 9F1 diluted at 1:80 and staining in paraffin-embedded human small intestine tissue performed on a Leica Bond™ system.

- Enzyme-linked Immunoabsorbent Assay