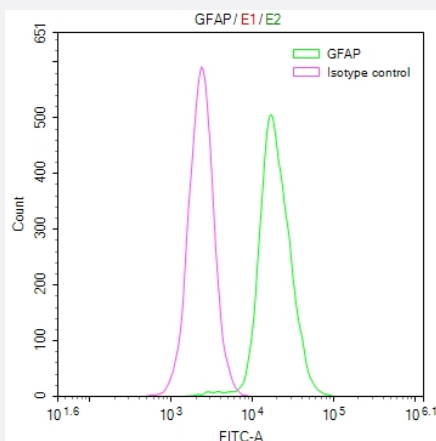


RecomAb™

GFAP recombinant monoclonal antibody, clone 14C8

Catalog # RAB07733 Size 100 uL

Applications



Flow Cytometry

Overlay Peak curve showing HeLa cells stained with GFAP recombinant monoclonal antibody, clone 14C8 (red line) at 1:50.

Specification

Product Description	Rabbit recombinant monoclonal antibody raised against human GFAP.
Antibody Species	Rabbit
Immunogen	Original antibody is raised against a synthetic peptide corresponding to human GFAP.
Reactivity	Human
Form	Liquid
Purification	Affinity chromatography purification
Isotype	IgG
Recommend Usage	ELISA Flow Cytometry(1:50-1:200) The optimal working dilution should be determined by the end user.
Storage Buffer	In PBS, pH7.4 (150 mM NaCl, 0.02% sodium azide and 50% glycerol)

Storage Instruction

Store at -20°C or -80°C.
Aliquot to avoid repeated freezing and thawing.

Note

This product contains sodium azide: a POISONOUS AND HAZARDOUS SUBSTANCE which should be handled by trained staff only.

Applications

- Enzyme-linked Immunoabsorbent Assay
- Flow Cytometry

Overlay Peak curve showing Hela cells stained with GFAP recombinant monoclonal antibody, clone 14C8 (red line) at 1:50.

Gene Info — GFAP

Entrez GeneID[2670](#)**Protein Accession#**[P14136](#)**Gene Name**

GFAP

Gene Alias

FLJ45472

Gene Description

glial fibrillary acidic protein

Omim ID[137780 203450](#)**Gene Ontology**[Hyperlink](#)**Gene Summary**

This gene encodes one of the major intermediate filament proteins of mature astrocytes. It is used as a marker to distinguish astrocytes from other glial cells during development. Mutations in this gene cause Alexander disease, a rare disorder of astrocytes in the central nervous system. Alternative splicing results in multiple transcript variants encoding distinct isoforms. [provided by RefSeq]

Other Designations

-

Disease

- [Alzheimer disease](#)
- [Cognition](#)