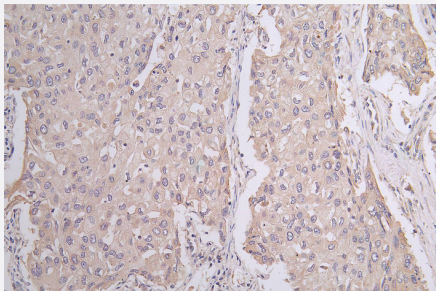


RecomAb™

# PANX1 recombinant monoclonal antibody, clone 28G5

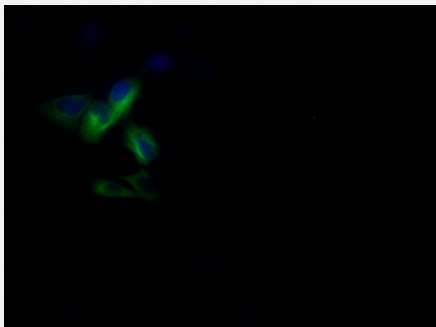
Catalog # RAB07707      Size 100 uL

## Applications



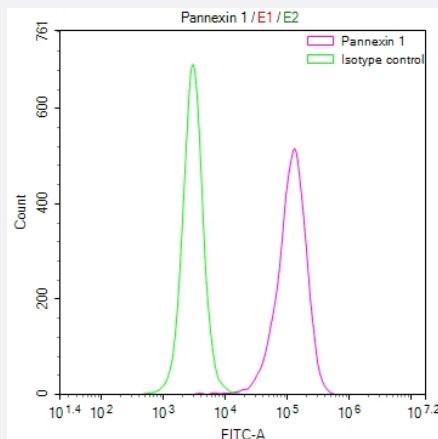
### Immunohistochemistry

Immunohistochemistry image of PANX1 recombinant monoclonal antibody, clone 28G5 diluted at 1:50 and staining in paraffin-embedded human lung cancer performed on a Leica Bond™ system.



### Immunofluorescence

Immunofluorescence staining of U251 Cells with PANX1 recombinant monoclonal antibody, clone 28G5 at 1:10, counter-stained with DAPI.



### Flow Cytometry

Overlay Peak curve showing A549 cells stained with PANX1 recombinant monoclonal antibody, clone 28G5 (red line) at 1:50.

## Specification

<b>Product Description</b>	Rabbit recombinant monoclonal antibody raised against human PANX1.
<b>Antibody Species</b>	Rabbit
<b>Immunogen</b>	Original antibody is raised against a synthetic peptide corresponding to human PANX1.
<b>Reactivity</b>	Human
<b>Form</b>	Liquid
<b>Purification</b>	Affinity chromatography purification
<b>Isotype</b>	IgG
<b>Recommend Usage</b>	ELISA Flow Cytometry(1:50-1:200) Immunohistochemistry(1:50-1:200) Immunofluorescence(1:20-1:200) The optimal working dilution should be determined by the end user.
<b>Storage Buffer</b>	In PBS, pH7.4 (150 mM NaCl, 0.02% sodium azide and 50% glycerol)
<b>Storage Instruction</b>	Store at -20°C or -80°C. Aliquot to avoid repeated freezing and thawing.
<b>Note</b>	This product contains sodium azide: a POISONOUS AND HAZARDOUS SUBSTANCE which should be handled by trained staff only.

## Applications

- Immunohistochemistry

Immunohistochemistry image of PANX1 recombinant monoclonal antibody, clone 28G5 diluted at 1:50 and staining in paraffin-embedded human lung cancer performed on a Leica Bond™ system.

- Immunofluorescence

Immunofluorescence staining of U251 Cells with PANX1 recombinant monoclonal antibody, clone 28G5 at 1:10, counter-stained with DAPI.

- Enzyme-linked Immunoabsorbent Assay

- Flow Cytometry

Overlay Peak curve showing A549 cells stained with PANX1 recombinant monoclonal antibody, clone 28G5 (red line) at 1:50.

## Gene Info — PANX1

**Entrez GeneID** [24145](#)**Protein Accession#** [Q96RD7](#)**Gene Name** PANX1**Gene Alias** MGC21309, MRS1, PX1, UNQ2529**Gene Description** pannexin 1**Omim ID** [608420](#)**Gene Ontology** [Hyperlink](#)

**Gene Summary** The protein encoded by this gene belongs to the innexin family. Innexin family members are the structural components of gap junctions. This protein and pannexin 2 are abundantly expressed in central nerve system (CNS) and are coexpressed in various neuronal populations. Studies in *Xenopus* oocytes suggest that this protein alone and in combination with pannexin 2 may form cell type-specific gap junctions with distinct properties. [provided by RefSeq]

**Other Designations** innexin

## Disease

- [Genetic Predisposition to Disease](#)
- [Ovarian Neoplasms](#)