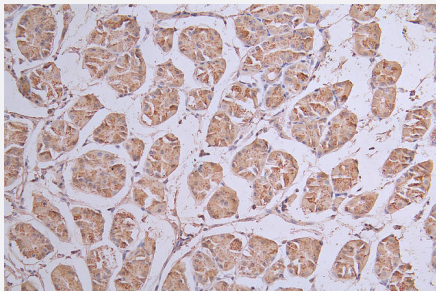


RecomAb™

SIRPA recombinant monoclonal antibody, clone 3C3

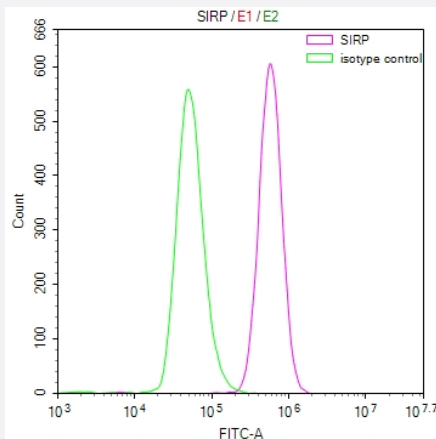
Catalog # RAB07673 Size 100 uL

Applications



Immunohistochemistry

Immunohistochemistry image of SIRPA recombinant monoclonal antibody, clone 3C3 diluted at 1:50 and staining in paraffin-embedded human stomach tissue performed on a Leica Bond™ system.



Flow Cytometry

Overlay Peak curve showing U937 cells stained with SIRPA recombinant monoclonal antibody, clone 3C3 (red line) at 1:50.

Specification

Product Description	Rabbit recombinant monoclonal antibody raised against human SIRPA.
Antibody Species	Rabbit
Immunogen	Original antibody is raised against a synthetic peptide corresponding to human SIRPA.
Reactivity	Human
Form	Liquid

Purification	Affinity chromatography purification
Isotype	IgG
Recommend Usage	ELISA Flow Cytometry(1:50-1:200) Immunohistochemistry(1:50-1:200) The optimal working dilution should be determined by the end user.
Storage Buffer	In PBS, pH7.4 (150 mM NaCl, 0.02% sodium azide and 50% glycerol)
Storage Instruction	Store at -20°C or -80°C. Aliquot to avoid repeated freezing and thawing.
Note	This product contains sodium azide: a POISONOUS AND HAZARDOUS SUBSTANCE which should be handled by trained staff only.

Applications

- Immunohistochemistry

Immunohistochemistry image of SIRPA recombinant monoclonal antibody, clone 3C3 diluted at 1:50 and staining in paraffin-embedded human stomach tissue performed on a Leica Bond™ system.

- Enzyme-linked Immunoabsorbent Assay

- Flow Cytometry

Overlay Peak curve showing U937 cells stained with SIRPA recombinant monoclonal antibody, clone 3C3 (red line) at 1:50.

Gene Info — SIRPA

Entrez GeneID	140885
Protein Accession#	P78324
Gene Name	SIRPA
Gene Alias	BIT, CD172A, MFR, MYD-1, P84, PTPNS1, SHPS-1, SHPS1, SIRP, SIRP-ALPHA-1, SIRPalpa, SIRPalpa2
Gene Description	signal-regulatory protein alpha
Omim ID	602461
Gene Ontology	Hyperlink

Gene Summary

The protein encoded by this gene is a member of the signal-regulatory-protein (SIRP) family, and also belongs to the immunoglobulin superfamily. SIRP family members are receptor-type transmembrane glycoproteins known to be involved in the negative regulation of receptor tyrosine kinase-coupled signaling processes. This protein can be phosphorylated by tyrosine kinases. The phosphotyrosine residues of this PTP have been shown to recruit SH2 domain containing tyrosine phosphatases (PTP), and serve as substrates of PTPs. This protein was found to participate in signal transduction mediated by various growth factor receptors. CD47 has been demonstrated to be a ligand for this receptor protein. This gene and its product share very high similarity with several other members of the SIRP family. These related genes are located in close proximity to each other on chromosome 20p13. Multiple alternatively spliced transcript variants have been determined for this gene. [provided by RefSeq]

Other Designations

OTTHUMP00000030001|SHP substrate-1|brain-immunoglobulin-like molecule with tyrosine-based activation motifs|macrophage fusion receptor|myd-1 antigen|protein tyrosine phosphatase, non-receptor type substrate 1|signal regulatory protein, alpha type 1|signal