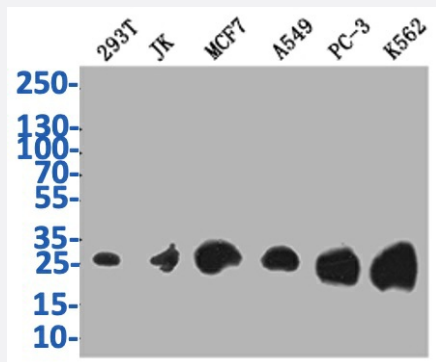


RecomAb™

TK1 recombinant monoclonal antibody, clone 6F6

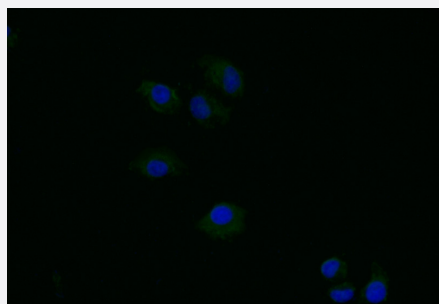
Catalog # RAB07663 Size 100 uL

Applications



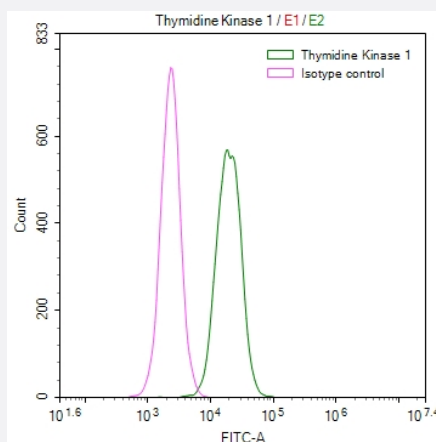
Western Blot

Western Blot analysis of Lane 1: 293T whole cell lysate; Lane 2: JK whole cell lysate; Lane3: MCF-7 whole cell lysate; Lane 4: A549 whole cell lysate; Lane 5: PC-3 whole cell lysate; Lane 6: K562 whole cell lysate.



Immunofluorescence

Immunofluorescence staining of HeLa Cells with TK1 recombinant monoclonal antibody, clone 6F6 at 1:50, counter-stained with DAPI.



Flow Cytometry

Overlay Peak curve showing HeLa cells stained with TK1 recombinant monoclonal antibody, clone 6F6 (red line) at 1:50.

Specification

Product Description	Rabbit recombinant monoclonal antibody raised against human TK1.
Antibody Species	Rabbit
Immunogen	Original antibody is raised against a synthetic peptide corresponding to human TK1.
Reactivity	Human
Form	Liquid
Purification	Affinity chromatography purification
Isotype	IgG
Recommend Usage	ELISA Flow Cytometry(1:50-1:200) Immunofluorescence(1:20-1:200) Western Blot(1:500-1:2000) The optimal working dilution should be determined by the end user.
Storage Buffer	In PBS, pH7.4 (150 mM NaCl, 0.02% sodium azide and 50% glycerol)
Storage Instruction	Store at -20°C or -80°C. Aliquot to avoid repeated freezing and thawing.
Note	This product contains sodium azide: a POISONOUS AND HAZARDOUS SUBSTANCE which should be handled by trained staff only.

Applications

- Western Blot

Western Blot analysis of Lane 1: 293T whole cell lysate; Lane 2: JK whole cell lysate; Lane3: MCF-7 whole cell lysate; Lane 4: A549 whole cell lysate; Lane 5: PC-3 whole cell lysate; Lane 6: K562 whole cell lysate.

- Immunofluorescence

Immunofluorescence staining of Hela Cells with TK1 recombinant monoclonal antibody, clone 6F6 at 1:50, counter-stained with DAPI.

- Enzyme-linked Immunoabsorbent Assay

- Flow Cytometry

Overlay Peak curve showing Hela cells stained with TK1 recombinant monoclonal antibody, clone 6F6 (red line) at 1:50.

Gene Info — TK1

Entrez GeneID	7083
Protein Accession#	P04183
Gene Name	TK1
Gene Alias	TK2
Gene Description	thymidine kinase 1, soluble
Omim ID	188300
Gene Ontology	Hyperlink
Gene Summary	O
Other Designations	thymidine kinase 1 soluble isoform thymidine kinase-1

Pathway

- [Drug metabolism - other enzymes](#)
- [Metabolic pathways](#)
- [Pyrimidine metabolism](#)

Disease

- [Cardiovascular Diseases](#)
- [Diabetes Mellitus](#)
- [Edema](#)