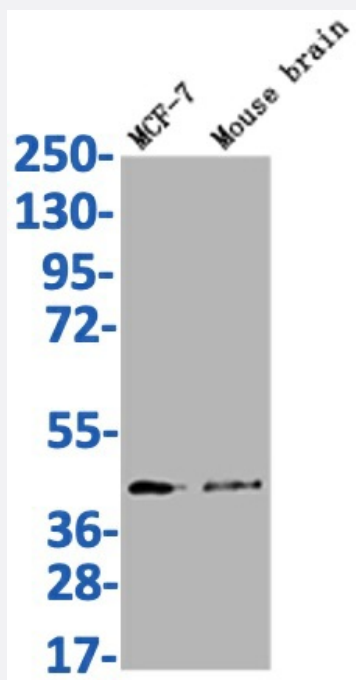


RecomAb™

SLC27A4 recombinant monoclonal antibody, clone 11A1

Catalog # RAB07646 Size 100 uL

Applications



Western Blot

Western Blot analysis of Lane 1: MCF-7 whole cell lysate; Lane 2: Mouse brain tissue.

Specification

| | |
|---------------------|---|
| Product Description | Rabbit recombinant monoclonal antibody raised against human and mouse SLC27A4. |
| Antibody Species | Rabbit |
| Immunogen | Original antibody is raised against a synthetic peptide corresponding to human SLC27A4. |
| Reactivity | Human, Mouse |
| Form | Liquid |
| Purification | Affinity chromatography purification |
| Isotype | IgG |

| | |
|----------------------------|--|
| Recommend Usage | ELISA Western Blot(1:500-1:2000) The optimal working dilution should be determined by the end user. |
| Storage Buffer | In PBS, pH7.4 (150 mM NaCl, 0.02% sodium azide and 50% glycerol) |
| Storage Instruction | Store at -20°C or -80°C. Aliquot to avoid repeated freezing and thawing. |
| Note | This product contains sodium azide: a POISONOUS AND HAZARDOUS SUBSTANCE which should be handled by trained staff only. |

Applications

- Western Blot

Western Blot analysis of Lane 1: MCF-7 whole cell lysate; Lane 2: Mouse brain tissue.

- Enzyme-linked Immunoabsorbent Assay

Gene Info — SLC27A4

| | |
|---------------------------|---|
| Entrez GeneID | 10999 |
| Protein Accession# | Q6P1M0 |
| Gene Name | SLC27A4 |
| Gene Alias | ACSVL4, FATP4 |
| Gene Description | solute carrier family 27 (fatty acid transporter), member 4 |
| Omim ID | 604194 |
| Gene Ontology | Hyperlink |
| Gene Summary | O |
| Other Designations | OTTHUMP00000022264 fatty acid transport protein 4 |

Pathway

- [PPAR signaling pathway](#)

Disease

- [Diabetes Mellitus](#)
- [Genetic Predisposition to Disease](#)
- [Hyperparathyroidism](#)