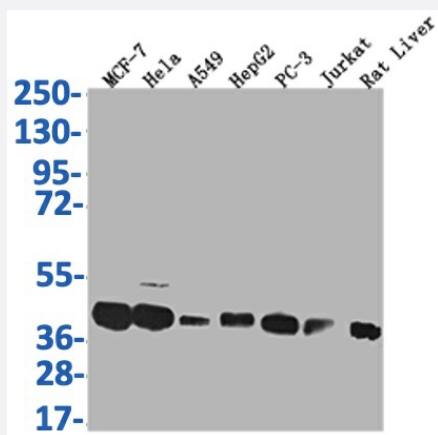


RecomAb™

MAS1L recombinant monoclonal antibody, clone 15B8

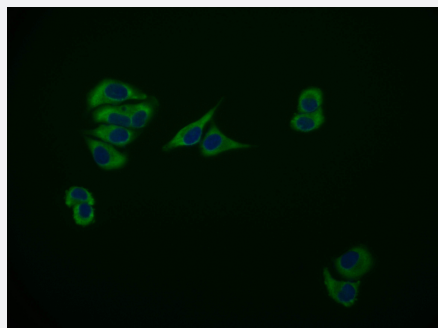
Catalog # RAB07636 Size 100 uL

Applications



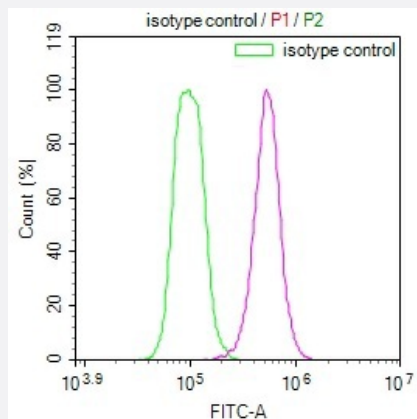
Western Blot

Western Blot analysis of Lane 1: MCF-7 whole cell lysate; Lane 2: HeLa whole cell lysate; Lane 3: A549 whole cell lysate; Lane 4: HepG2 whole cell lysate; Lane 5: PC-3 whole cell lysate; Lane 6: Jurkat whole cell lysate; Lane 7: Rat liver tissue.



Immunofluorescence

Immunofluorescence staining of HeLa Cells with MAS1L recombinant monoclonal antibody, clone 15B8 at 1:50, counter-stained with DAPI.



Flow Cytometry

Overlay Peak curve showing HeLa cells stained with MAS1L recombinant monoclonal antibody, clone 15B8 (red line) at 1:100.

Specification

Product Description	Rabbit recombinant monoclonal antibody raised against human and rat MAS1L.
Antibody Species	Rabbit
Immunogen	Original antibody is raised against a synthetic peptide corresponding to human MAS1L.
Reactivity	Human, Rat
Form	Liquid
Purification	Affinity chromatography purification
Isotype	IgG
Recommend Usage	ELISA Flow Cytometry(1:50-1:200) Immunofluorescence(1:20-1:200) Western Blot(1:500-1:2000) The optimal working dilution should be determined by the end user.
Storage Buffer	In PBS, pH7.4 (150 mM NaCl, 0.02% sodium azide and 50% glycerol)
Storage Instruction	Store at -20°C or -80°C. Aliquot to avoid repeated freezing and thawing.
Note	This product contains sodium azide: a POISONOUS AND HAZARDOUS SUBSTANCE which should be handled by trained staff only.

Applications

- Western Blot

Western Blot analysis of Lane 1: MCF-7 whole cell lysate; Lane 2: Hela whole cell lysate; Lane3: A549 whole cell lysate; Lane 4: HepG2 whole cell lysate; Lane 5: PC-3 whole cell lysate; Lane 6: Jurkat whole cell lysate; Lane 7: Rat liver tissue.

- Immunofluorescence

Immunofluorescence staining of Hela Cells with MAS1L recombinant monoclonal antibody, clone 15B8 at 1:50, counter-stained with DAPI.

- Enzyme-linked Immunoabsorbent Assay

- Flow Cytometry

Overlay Peak curve showing Hela cells stained with MAS1L recombinant monoclonal antibody, clone 15B8 (red line) at 1:100.

Gene Info — MAS1L

Entrez GeneID [116511](#)

Protein Accession# [P35410](#)

Gene Name MAS1L

Gene Alias MAS-L, MGC119987, MRG, dJ994E9.2

Gene Description MAS1 oncogene-like

Omim ID [607235](#)

Gene Ontology [Hyperlink](#)

Other Designations OTTHUMP00000029101|mas-related G protein-coupled MRG

Disease

- [Genetic Predisposition to Disease](#)
- [Lupus Erythematosus](#)