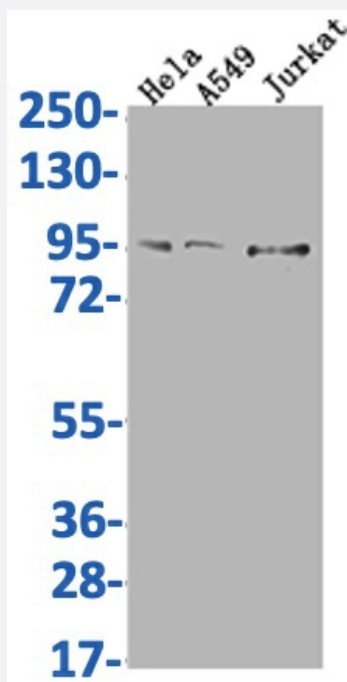


RecomAb™

CARS recombinant monoclonal antibody, clone 8B11

Catalog # RAB07613 Size 100 uL

Applications



Western Blot

Western Blot analysis of Lane 1: HeLa whole cell lysate; Lane 2: A549 whole cell lysate; Lane3: Jurkat whole cell lysate.

Specification

Product Description	Rabbit recombinant monoclonal antibody raised against human CARS.
Antibody Species	Rabbit
Immunogen	Original antibody is raised against a synthetic peptide corresponding to human CARS.
Reactivity	Human
Form	Liquid
Purification	Affinity chromatography purification

Isotype	IgG
Recommend Usage	ELISA Western Blot(1:500-1:2000) The optimal working dilution should be determined by the end user.
Storage Buffer	In PBS, pH7.4 (150 mM NaCl, 0.02% sodium azide and 50% glycerol)
Storage Instruction	Store at -20°C or -80°C. Aliquot to avoid repeated freezing and thawing.
Note	This product contains sodium azide: a POISONOUS AND HAZARDOUS SUBSTANCE which should be handled by trained staff only.

Applications

- Western Blot

Western Blot analysis of Lane 1: Hela whole cell lysate; Lane 2: A549 whole cell lysate; Lane3: Jurkat whole cell lysate.

- Enzyme-linked Immunoabsorbent Assay

Gene Info — CARS

Entrez GeneID	833
Protein Accession#	P49589
Gene Name	CARS
Gene Alias	CARS1, CYSRS, MGC:11246
Gene Description	cysteinyI-tRNA synthetase
Omim ID	123859
Gene Ontology	Hyperlink
Gene Summary	This gene encodes a class 1 aminoacyl-tRNA synthetase, cysteinyI-tRNA synthetase. Each of the twenty aminoacyl-tRNA synthetases catalyzes the aminoacylation of a specific tRNA or tRNA isoaccepting family with the cognate amino acid. This gene is one of several located near the imprinted gene domain of 11p15.5, an important tumor-suppressor gene region. Alterations in this region have been associated with the Beckwith-Wiedemann syndrome, Wilms tumor, rhabdomyosarcoma, adrenocortical carcinoma, and lung, ovarian, and breast cancer. Alternative splicing of this gene results in multiple transcript variants encoding distinct isoforms. [provided by RefSeq]

Other Designations

OTTHUMP00000012605|cysteine tRNA ligase 1, cytoplasmic|cysteine translase|cysteine-tRNA li
gase

Pathway

- [Aminoacyl-tRNA biosynthesis](#)

Disease

- [Diabetes Mellitus](#)
- [Diabetic Nephropathies](#)
- [Genetic Predisposition to Disease](#)
- [Kidney Failure](#)
- [Proteinuria](#)