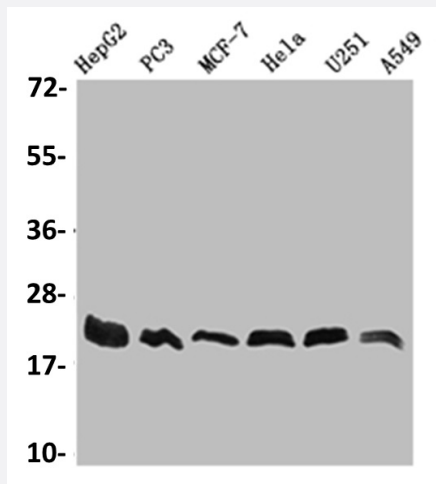


RecomAb™

FIS1 recombinant monoclonal antibody, clone 27B4

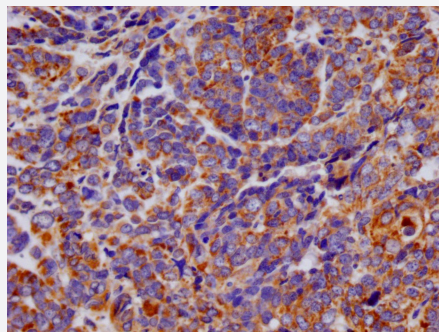
Catalog # RAB07587 Size 100 uL

Applications



Western Blot (Cell lysate)

Western blot analysis of HepG2 whole cell lysate, PC3 whole cell lysate, MCF-7 whole cell lysate, HeLa whole cell lysate, U251 whole cell lysate, A549 whole cell lysate with FIS1 recombinant monoclonal antibody, clone 27B4 (Cat # RAB07587).



Immunohistochemistry (Formalin/PFA-fixed paraffin-embedded sections)

Immunohistochemical analysis of paraffin-embedded human ovarian cancer using FIS1 recombinant monoclonal antibody, clone 27B4 (Cat # RAB07587) on a Leica Bond™ system. After dewaxing and hydration, antigen retrieval was mediated by high pressure in a citrate buffer (pH 6.0). Section was blocked with 10% normal goat serum 30min at RT. Then primary antibody (1% BSA) was incubated at 4°C overnight. The primary is detected by a Goat anti-rabbit IgG polymer labeled by HRP and visualized using 0.05% DAB.

Specification

Product Description	Rabbit recombinant monoclonal antibody raised against human FIS1.
Antibody Species	Rabbit
Immunogen	Original antibody is raised against a synthetic peptide corresponding to human FIS1.

Theoretical MW (kDa)	Calculated MW: 17
Reactivity	Human
Form	Liquid
Purification	Affinity chromatography purification
Isotype	IgG
Recommend Usage	ELISA Immunohistochemistry (1:50-1:200) Western Blot (1:500-1:2000) The optimal working dilution should be determined by the end user.
Storage Buffer	In PBS, pH7.4 (150 mM NaCl, 0.02% sodium azide and 50% glycerol)
Storage Instruction	Store at -20°C or -80°C. Aliquot to avoid repeated freezing and thawing.
Note	This product contains sodium azide: a POISONOUS AND HAZARDOUS SUBSTANCE which should be handled by trained staff only.

Applications

- Western Blot (Cell lysate)

Western blot analysis of HepG2 whole cell lysate, PC3 whole cell lysate, MCF-7 whole cell lysate, Hela whole cell lysate, U251 whole cell lysate, A549 whole cell lysate with FIS1 recombinant monoclonal antibody, clone 27B4 (Cat # RAB07587).

- Immunohistochemistry (Formalin/PFA-fixed paraffin-embedded sections)

Immunohistochemical analysis of paraffin-embedded human ovarian cancer using FIS1 recombinant monoclonal antibody, clone 27B4 (Cat # RAB07587) on a Leica BondTM system. After dewaxing and hydration, antigen retrieval was mediated by high pressure in a citrate buffer (pH 6.0). Section was blocked with 10% normal goat serum 30min at RT. Then primary antibody (1% BSA) was incubated at 4°C overnight. The primary is detected by a Goat anti-rabbit IgG polymer labeled by HRP and visualized using 0.05% DAB.

- Enzyme-linked Immunoabsorbent Assay

Gene Info — FIS1

Entrez GeneID	51024
Protein Accession#	Q9Y3D6
Gene Name	FIS1

Gene Alias	CGI-135, TTC11
Gene Description	fission 1 (mitochondrial outer membrane) homolog (S. cerevisiae)
Omim ID	609003
Gene Ontology	Hyperlink
Gene Summary	The balance between fission and fusion regulates the morphology of mitochondria. TTC11 is a component of a mitochondrial complex that promotes mitochondrial fission (James et al., 2003 [PubMed 12783892]).[supplied by OMIM]
Other Designations	H_NH0132A01.6 tetratricopeptide repeat domain 11