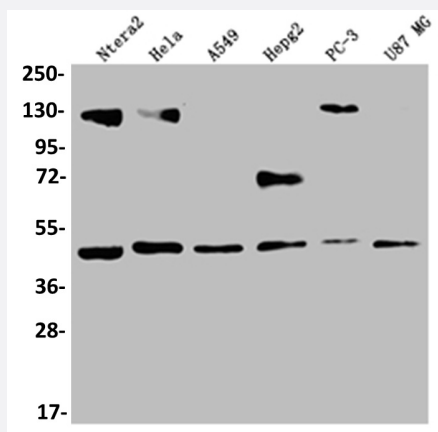


RecomAb™

# HIF1AN recombinant monoclonal antibody, clone 12F11

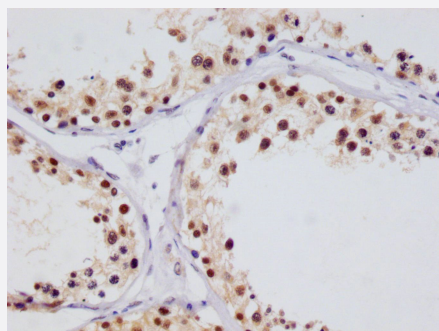
Catalog # RAB07583      Size 100 uL

## Applications



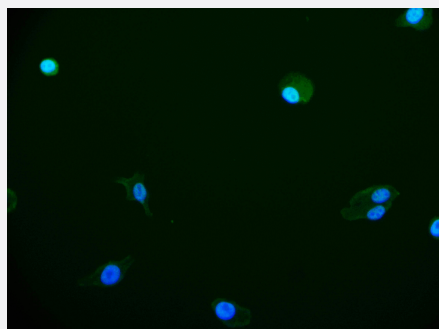
### Western Blot (Cell lysate)

Western blot analysis of Ntera-2 whole cell lysate, HeLa whole cell lysate, A549 whole cell lysate, HepG2 whole cell lysate, PC3 whole cell lysate, U87 whole cell lysate with HIF1AN recombinant monoclonal antibody, clone 12F11 (Cat # RAB07583).



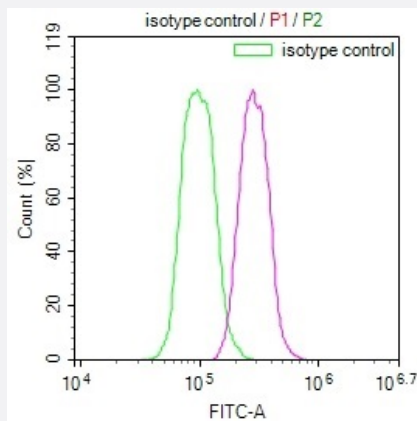
### Immunohistochemistry (Formalin/PFA-fixed paraffin-embedded sections)

Immunohistochemical analysis of paraffin-embedded human testis tissue using HIF1AN recombinant monoclonal antibody, clone 12F11 (Cat # RAB07583) on a Leica Bond™ system. After dewaxing and hydration, antigen retrieval was mediated by high pressure in a citrate buffer (pH 6.0). Section was blocked with 10% normal goat serum 30min at RT. Then primary antibody (1% BSA) was incubated at 4°C overnight. The primary is detected by a Goat anti-rabbit IgG polymer labeled by HRP and visualized using 0.05% DAB.



### Immunofluorescence

Immunofluorescent staining of HepG2 Cells with HIF1AN recombinant monoclonal antibody, clone 12F11 (Cat # RAB07583), counter-stained with DAPI. The cells were fixed in 4% formaldehyde and blocked in 10% normal Goat Serum. The cells were then incubated with the antibody overnight at 4°C. The secondary antibody was Alexa Fluor 525-conjugated AffiniPure Goat Anti-Rabbit IgG(H+L).



## Flow Cytometry

Flow cytometry shows Hela cells stained with HIF1AN recombinant monoclonal antibody, clone 12F11 (Cat # RAB07583)(red line). The cells were fixed in 4% formaldehyde and permeated by 0.2% TritonX-100. Then 10% normal goat serum to block non-specific protein-protein interactions followed by the antibody (1ug/1\*10<sup>6</sup>cells) for 45min at 4°C. The secondary antibody used was FITC-conjugated Goat Anti-rabbit IgG(H+L) at 1:200 dilution for 35min at 4°C. Control antibody (green line) was rabbit IgG (1ug/1\*10<sup>6</sup>cells) used under the same conditions. Acquisition of >10,000 events was performed.

## Specification

<b>Product Description</b>	Rabbit recombinant monoclonal antibody raised against human HIF1AN.
<b>Antibody Species</b>	Rabbit
<b>Immunogen</b>	Original antibody is raised against a synthetic peptide corresponding to human HIF1AN.
<b>Theoretical MW (kDa)</b>	Calculated MW: 41
<b>Reactivity</b>	Human
<b>Form</b>	Liquid
<b>Purification</b>	Affinity chromatography purification
<b>Isotype</b>	IgG
<b>Recommend Usage</b>	ELISA Flow Cytometry(1:50-1:200) Immunofluorescence (1:50-1:200) Immunohistochemistry (1:50-1:200) Western Blot (1:500-1:2000) The optimal working dilution should be determined by the end user.
<b>Storage Buffer</b>	In PBS, pH7.4 (150 mM NaCl, 0.02% sodium azide and 50% glycerol)
<b>Storage Instruction</b>	Store at -20°C or -80°C. Aliquot to avoid repeated freezing and thawing.
<b>Note</b>	This product contains sodium azide: a POISONOUS AND HAZARDOUS SUBSTANCE which should be handled by trained staff only.

## Applications

- Western Blot (Cell lysate)

Western blot analysis of Ntera-2 whole cell lysate, Hela whole cell lysate, A549 whole cell lysate, HepG2 whole cell lysate, PC3 whole cell lysate, U87 whole cell lysate with HIF1AN recombinant monoclonal antibody, clone 12F11 (Cat # RAB07583).

- Immunohistochemistry (Formalin/PFA-fixed paraffin-embedded sections)

Immunohistochemical analysis of paraffin-embedded human testis tissue using HIF1AN recombinant monoclonal antibody, clone 12F11 (Cat # RAB07583) on a Leica Bond<sup>TM</sup> system. After dewaxing and hydration, antigen retrieval was mediated by high pressure in a citrate buffer (pH 6.0). Section was blocked with 10% normal goat serum 30min at RT. Then primary antibody (1% BSA) was incubated at 4°C overnight. The primary is detected by a Goat anti-rabbit IgG polymer labeled by HRP and visualized using 0.05% DAB.

- Immunofluorescence

Immunofluorescent staining of HepG2 Cells with HIF1AN recombinant monoclonal antibody, clone 12F11 (Cat # RAB07583), counter-stained with DAPI. The cells were fixed in 4% formaldehyde and blocked in 10% normal Goat Serum. The cells were then incubated with the antibody overnight at 4°C. The secondary antibody was Alexa Fluor 525-conjugated AffiniPure Goat Anti-Rabbit IgG(H+L).

- Enzyme-linked Immunoabsorbent Assay

- Flow Cytometry

Flow cytometry shows Hela cells stained with HIF1AN recombinant monoclonal antibody, clone 12F11 (Cat # RAB07583)(red line). The cells were fixed in 4% formaldehyde and permeated by 0.2% TritonX-100. Then 10% normal goat serum to block non-specific protein-protein interactions followed by the antibody (1ug/1\*10<sup>6</sup>cells) for 45min at 4°C. The secondary antibody used was FITC-conjugated Goat Anti-rabbit IgG(H+L) at 1:200 dilution for 35min at 4°C. Control antibody (green line) was rabbit IgG (1ug/1\*10<sup>6</sup>cells) used under the same conditions. Acquisition of >10,000 events was performed.

## Gene Info — HIF1AN

Entrez GeneID [55662](#)

Protein Accession# [Q9NWT6](#)

Gene Name HIF1AN

Gene Alias DKFZp762F1811, FIH1, FLJ20615, FLJ22027

Gene Description hypoxia inducible factor 1, alpha subunit inhibitor

Omim ID [606615](#)

Gene Ontology [Hyperlink](#)

## Gene Summary

O

## Other Designations

OTTHUMP00000020284|Peptide-aspartate beta-dioxygenase|factor inhibiting HIF1|hypoxia-inducible factor 1, alpha subunit inhibitor

## Disease

- [Adenocarcinoma](#)
- [Alzheimer Disease](#)
- [Esophageal Neoplasms](#)
- [Genetic Predisposition to Disease](#)
- [Lung Neoplasms](#)
- [Neovascularization](#)
- [Prostate cancer](#)
- [Prostatic Neoplasms](#)
- [Pulmonary Disease](#)
- [Urinary Bladder Neoplasms](#)
- [Werner syndrome](#)