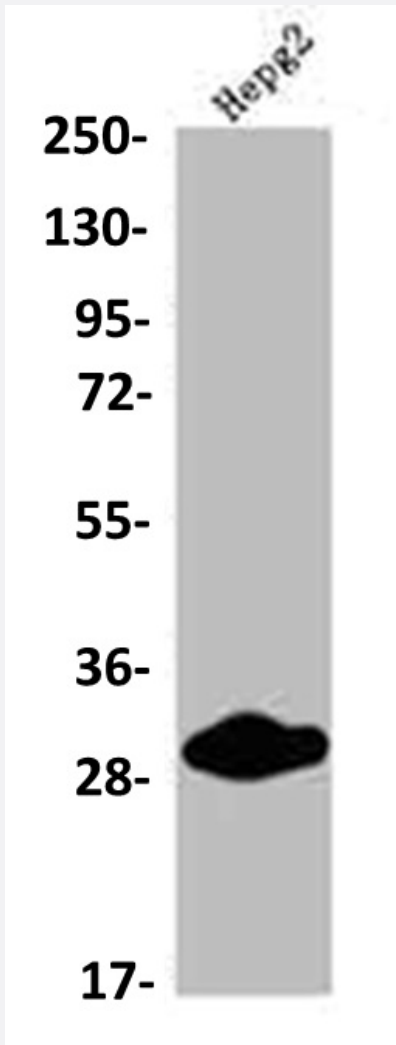


RecomAb™

CDX1 recombinant monoclonal antibody, clone 11E10

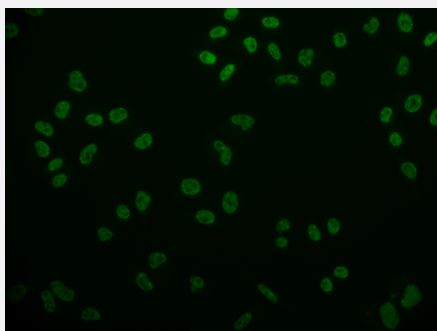
Catalog # RAB07582 Size 100 uL

Applications



Western Blot (Cell lysate)

Western blot analysis of HepG2 whole cell lysate with CDX1 recombinant monoclonal antibody, clone 11E10 (Cat # RAB07582).



Immunofluorescence

Immunofluorescent staining of Hela Cells with CDX1 recombinant monoclonal antibody, clone 11E10 (Cat # RAB07582), counter-stained with DAPI. The cells were fixed in 4% formaldehyde and blocked in 10% normal Goat Serum. The cells were then incubated with the antibody overnight at 4°C. The secondary antibody was Alexa Fluor 524-conjugated AffiniPure Goat Anti-Rabbit IgG(H+L).

Specification

Product Description	Rabbit recombinant monoclonal antibody raised against human CDX1.
Antibody Species	Rabbit
Immunogen	Original antibody is raised against a synthetic peptide corresponding to human CDX1.
Theoretical MW (kDa)	Calculated MW: 29, 1
Reactivity	Human
Form	Liquid
Purification	Affinity chromatography purification
Isotype	IgG
Recommend Usage	ELISA Immunofluorescence (1:50-1:200) Western Blot (1:500-1:2000) The optimal working dilution should be determined by the end user.
Storage Buffer	In PBS, pH7.4 (150 mM NaCl, 0.02% sodium azide and 50% glycerol)
Storage Instruction	Store at -20°C or -80°C. Aliquot to avoid repeated freezing and thawing.
Note	This product contains sodium azide: a POISONOUS AND HAZARDOUS SUBSTANCE which should be handled by trained staff only.

Applications

- Western Blot (Cell lysate)

Western blot analysis of HepG2 whole cell lysate with CDX1 recombinant monoclonal antibody, clone 11E10 (Cat # RAB07582).

- Immunofluorescence

Immunofluorescent staining of Hela Cells with CDX1 recombinant monoclonal antibody, clone 11E10 (Cat # RAB07582), counter-stained with DAPI. The cells were fixed in 4% formaldehyde and blocked in 10% normal Goat Serum. The cells were then incubated with the antibody overnight at 4°C. The secondary antibody was Alexa Fluor 524-conjugated AffiniPure Goat Anti-Rabbit IgG(H+L).

- Enzyme-linked Immunoabsorbent Assay

Gene Info — CDX1

Entrez GeneID [1044](#)

Protein Accession# [P47902](#)

Gene Name CDX1

Gene Alias MGC116915

Gene Description caudal type homeobox 1

Omim ID [600746](#)

Gene Ontology [Hyperlink](#)

Gene Summary This gene is a member of the caudal-related homeobox transcription factor gene family. The encoded DNA-binding protein regulates intestine-specific gene expression and enterocyte differentiation. It has been shown to induce expression of the intestinal alkaline phosphatase gene, and inhibit beta-catenin/T-cell factor transcriptional activity. [provided by RefSeq]

Other Designations caudal type homeo box transcription factor 1|caudal type homeobox transcription factor 1|caudal-type homeobox protein CDX1