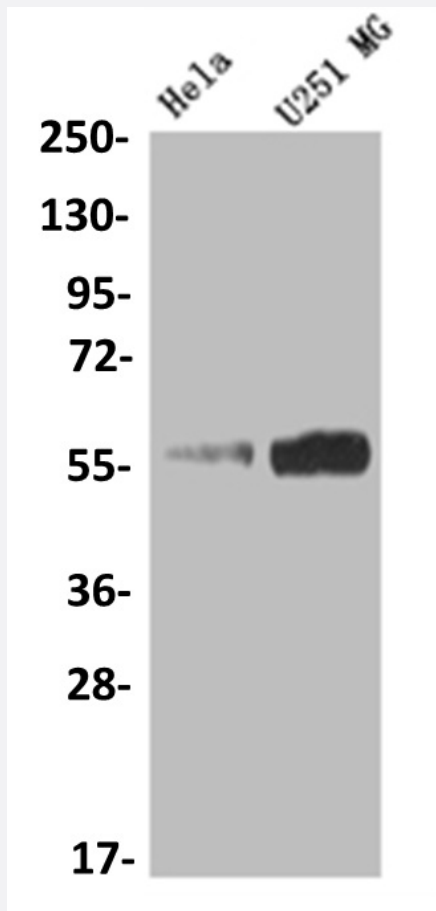


RecomAb™

NUF2 recombinant monoclonal antibody, clone 8B7

Catalog # RAB07580 Size 100 uL

Applications



Western Blot (Cell lysate)

Western blot analysis of HeLa whole cell lysate, U251 whole cell lysate with NUF2 recombinant monoclonal antibody, clone 8B7 (Cat # RAB07580).

Specification

Product Description	Rabbit recombinant monoclonal antibody raised against human NUF2.
Antibody Species	Rabbit
Immunogen	Original antibody is raised against a synthetic peptide corresponding to human NUF2.

Theoretical MW (kDa)	55
Reactivity	Human
Form	Liquid
Purification	Affinity chromatography purification
Isotype	IgG
Recommend Usage	ELISA Western Blot (1:500-1:2000) The optimal working dilution should be determined by the end user.
Storage Buffer	In PBS, pH7.4 (150 mM NaCl, 0.02% sodium azide and 50% glycerol)
Storage Instruction	Store at -20°C or -80°C. Aliquot to avoid repeated freezing and thawing.
Note	This product contains sodium azide: a POISONOUS AND HAZARDOUS SUBSTANCE which should be handled by trained staff only.

Applications

- Western Blot (Cell lysate)

Western blot analysis of Hela whole cell lysate, U251 whole cell lysate with NUF2 recombinant monoclonal antibody, clone 8B7 (Cat # RAB07580).

- Enzyme-linked Immunoabsorbent Assay

Gene Info — NUF2

Entrez GeneID	83540
Protein Accession#	Q9BZD4
Gene Name	NUF2
Gene Alias	CDCA1, NUF2R
Gene Description	NUF2, NDC80 kinetochore complex component, homolog (S. cerevisiae)
Gene Ontology	Hyperlink

Gene Summary

This gene encodes a protein that is highly similar to yeast Nuf2, a component of a conserved protein complex associated with the centromere. Yeast Nuf2 disappears from the centromere during meiotic prophase when centromeres lose their connection to the spindle pole body, and plays a regulatory role in chromosome segregation. The encoded protein is found to be associated with centromeres of mitotic HeLa cells, which suggests that this protein is a functional homolog of yeast Nuf2. Alternatively spliced transcript variants that encode the same protein have been described. [provided by RefSeq]

Other Designations

NUF2, NDC80 kinetochore complex component|OTTHUMP00000032177|OTTHUMP00000032178|cell division cycle associated 1

Disease

- [Genetic Predisposition to Disease](#)
- [Hypertension](#)