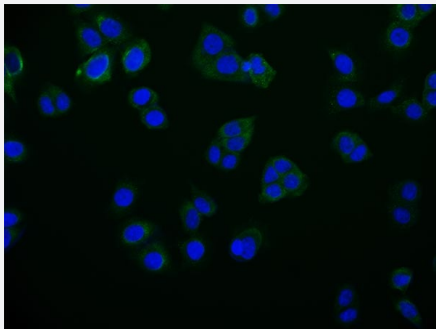


RecomAb™

# RAB25 recombinant monoclonal antibody, clone 27H3

Catalog # RAB07576      Size 100 uL

## Applications



### Immunofluorescence

Immunofluorescent staining of PC-3 Cells with RAB25 recombinant monoclonal antibody, clone 27H3 (Cat # RAB07576), counter-stained with DAPI. The cells were fixed in 4% formaldehyde and blocked in 10% normal Goat Serum. The cells were then incubated with the antibody overnight at 4°C. The secondary antibody was Alexa Fluor 516-conjugated AffiniPure Goat Anti-Rabbit IgG(H+L).

## Specification

<b>Product Description</b>	Rabbit recombinant monoclonal antibody raised against human RAB25.
<b>Antibody Species</b>	Rabbit
<b>Immunogen</b>	Original antibody is raised against a synthetic peptide corresponding to human RAB25.
<b>Reactivity</b>	Human
<b>Form</b>	Liquid
<b>Purification</b>	Affinity chromatography purification
<b>Isotype</b>	IgG
<b>Recommend Usage</b>	ELISA Immunofluorescence (1:50-1:200) The optimal working dilution should be determined by the end user.
<b>Storage Buffer</b>	In PBS, pH7.4 (150 mM NaCl, 0.02% sodium azide and 50% glycerol)
<b>Storage Instruction</b>	Store at -20°C or -80°C. Aliquot to avoid repeated freezing and thawing.

**Note**

This product contains sodium azide: a POISONOUS AND HAZARDOUS SUBSTANCE which should be handled by trained staff only.

## Applications

- Immunofluorescence

Immunofluorescent staining of PC-3 Cells with RAB25 recombinant monoclonal antibody, clone 27H3 (Cat # RAB07576), counter-stained with DAPI. The cells were fixed in 4% formaldehyde and blocked in 10% normal Goat Serum. The cells were then incubated with the antibody overnight at 4°C. The secondary antibody was Alexa Fluor 516-conjugated AffiniPure Goat Anti-Rabbit IgG(H+L).

- Enzyme-linked Immunoabsorbent Assay

## Gene Info — RAB25

Entrez GeneID	<a href="#">57111</a>
---------------	-----------------------

Protein Accession#	<a href="#">P57735</a>
--------------------	------------------------

Gene Name	RAB25
-----------	-------

Gene Alias	CATX-8
------------	--------

Gene Description	RAB25, member RAS oncogene family
------------------	-----------------------------------

Gene Ontology	<a href="#">Hyperlink</a>
---------------	---------------------------

Gene Summary	RAB proteins, such as RAB25, are members of the RAS superfamily of small GTPases that are involved in membrane trafficking. Members of the RAB11 subfamily, including RAB25, control the return of internalized membrane-associated moieties to the cell surface (Caswell et al., 2007 [PubMed 17925226]).[supplied by OMIM]
--------------	--

Other Designations	OTTHUMP00000018847
--------------------	--------------------