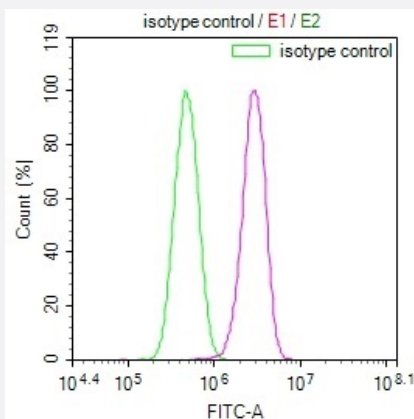


RecomAb™

ENTPD1 recombinant monoclonal antibody, clone 12D12

Catalog # RAB07566 Size 100 uL

Applications



Flow Cytometry

Flow cytometry shows PC3 cells stained with ENTPD1 recombinant monoclonal antibody, clone 12D12 (Cat # RAB07566)(red line). The cells were incubated in 10% normal goat serum to block non-specific protein-protein interactions followed by the antibody (1ug/1*10⁶cells) for 45min at 4°C. The secondary antibody used was FITC-conjugated Goat Anti-rabbit IgG(H+L) at 1:200 dilution for 35min at 4°C. Control antibody (green line) was rabbit IgG (1ug/1*10⁶cells) used under the same conditions. Acquisition of >10,000 events was performed.

Specification

Product Description	Rabbit recombinant monoclonal antibody raised against human ENTPD1.
Antibody Species	Rabbit
Immunogen	Original antibody is raised against a synthetic peptide corresponding to human ENTPD1.
Reactivity	Human
Form	Liquid
Purification	Affinity chromatography purification
Isotype	IgG
Recommend Usage	ELISA Flow Cytometry(1:50-1:200) The optimal working dilution should be determined by the end user.
Storage Buffer	In PBS, pH7.4 (150 mM NaCl, 0.02% sodium azide and 50% glycerol)

Storage Instruction

Store at -20°C or -80°C.
Aliquot to avoid repeated freezing and thawing.

Note

This product contains sodium azide: a POISONOUS AND HAZARDOUS SUBSTANCE which should be handled by trained staff only.

Applications

- Enzyme-linked Immunoabsorbent Assay
- Flow Cytometry

Flow cytometry shows PC3 cells stained with ENTPD1 recombinant monoclonal antibody, clone 12D12 (Cat # RAB07566)(red line). The cells were incubated in 10% normal goat serum to block non-specific protein-protein interactions followed by the antibody (1 μ g/1*10⁶cells) for 45min at 4°C. The secondary antibody used was FITC-conjugated Goat Anti-rabbit IgG(H+L) at 1:200 dilution for 35min at 4°C. Control antibody (green line) was rabbit IgG (1 μ g/1*10⁶cells) used under the same conditions. Acquisition of >10,000 events was performed.

Gene Info — ENTPD1

Entrez GeneID	953
Protein Accession#	P49961
Gene Name	ENTPD1
Gene Alias	ATPDase, CD39, DKFZp686D194, DKFZp686I093, FLJ40921, FLJ40959, NTPDase-1
Gene Description	ectonucleoside triphosphate diphosphohydrolase 1
Omim ID	601752
Gene Ontology	Hyperlink
Other Designations	CD39 antigen OTTHUMP00000020161 ecto-ATP diphosphohydrolase ecto-apyrase lymphoid cell activation antigen

Pathway

- [Purine metabolism](#)
- [Pyrimidine metabolism](#)

Disease

- [Alzheimer Disease](#)
- [Diabetes Mellitus](#)
- [Diabetic Nephropathies](#)
- [Disease Models](#)
- [Genetic Predisposition to Disease](#)
- [Kidney Failure](#)
- [Tobacco Use Disorder](#)