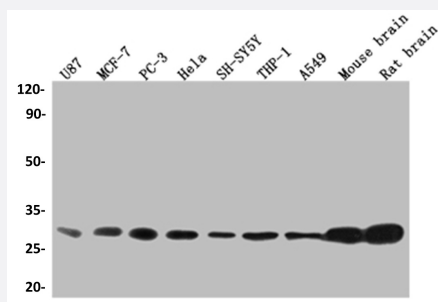


RecomAb™

YWHAB recombinant monoclonal antibody, clone 6F6

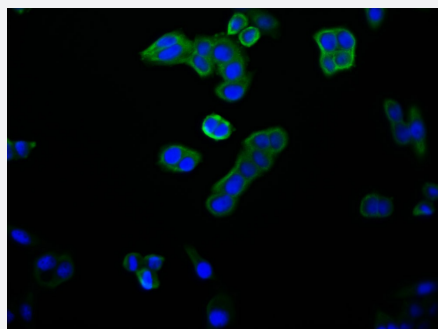
Catalog # RAB07561 Size 100 uL

Applications



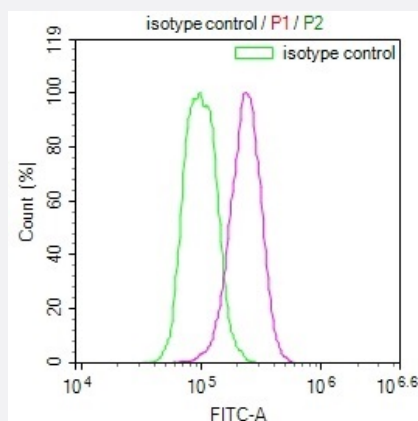
Western Blot

Western blot analysis of U87 whole cell lysate, MCF-7 whole cell lysate, PC3 whole cell lysate, HeLa whole cell lysate, SH-SY5Y whole cell lysate, THP-1 whole cell lysate, A549 whole cell lysate, Mouse brain tissue, Rat brain tissue with YWHAB recombinant monoclonal antibody, clone 6F6 (Cat # RAB07561).



Immunofluorescence

Immunofluorescent staining of PC-3 Cells with YWHAB recombinant monoclonal antibody, clone 6F6 (Cat # RAB07561), counter-stained with DAPI. The cells were fixed in 4% formaldehyde and blocked in 10% normal Goat Serum. The cells were then incubated with the antibody overnight at 4°C. The secondary antibody was Alexa Fluor 490-conjugated AffiniPure Goat Anti-Rabbit IgG(H+L).



Flow Cytometry

Flow cytometry shows HeLa cells stained with YWHAB recombinant monoclonal antibody, clone 6F6 (Cat # RAB07561)(red line). The cells were fixed in 4% formaldehyde and permeated by 0.2% TritonX-100. Then 10% normal goat serum to block non-specific protein-protein interactions followed by the antibody (1ug/1*10⁶cells) for 45min at 4°C. The secondary antibody used was FITC-conjugated Goat Anti-rabbit IgG(H+L) at 1:200 dilution for 35min at 4°C. Control antibody (green line) was rabbit IgG (1ug/1*10⁶cells) used under the same conditions. Acquisition of >10,000 events was performed.

Specification

Product Description	Rabbit recombinant monoclonal antibody raised against human YWHAB.
Antibody Species	Rabbit
Immunogen	Original antibody is raised against a synthetic peptide corresponding to human YWHAB.
Theoretical MW (kDa)	Calculated MW: 29, 2
Reactivity	Human, Mouse, Rat
Form	Liquid
Purification	Affinity chromatography purification
Isotype	IgG
Recommend Usage	ELISA Flow Cytometry(1:50-1:200) Immunofluorescence (1:50-1:200) Western Blot (1:500-1:2000) The optimal working dilution should be determined by the end user.
Storage Buffer	In PBS, pH7.4 (150 mM NaCl, 0.02% sodium azide and 50% glycerol)
Storage Instruction	Store at -20°C or -80°C. Aliquot to avoid repeated freezing and thawing.
Note	This product contains sodium azide: a POISONOUS AND HAZARDOUS SUBSTANCE which should be handled by trained staff only.

Applications

- Western Blot

Western blot analysis of U87 whole cell lysate, MCF-7 whole cell lysate, PC3 whole cell lysate, Hela whole cell lysate, SH-SY5Y whole cell lysate, THP-1 whole cell lysate, A549 whole cell lysate, Mouse brain tissue, Rat brain tissue with YWHAB recombinant monoclonal antibody, clone 6F6 (Cat # RAB07561).

- Immunofluorescence

Immunofluorescent staining of PC-3 Cells with YWHAB recombinant monoclonal antibody, clone 6F6 (Cat # RAB07561), counter-stained with DAPI. The cells were fixed in 4% formaldehyde and blocked in 10% normal Goat Serum. The cells were then incubated with the antibody overnight at 4°C. The secondary antibody was Alexa Fluor 490-conjugated AffiniPure Goat Anti-Rabbit IgG(H+L).

- Enzyme-linked Immunoabsorbent Assay

- Flow Cytometry

Flow cytometry shows Hela cells stained with YWHAB recombinant monoclonal antibody, clone 6F6 (Cat # RAB07561)(red line). The cells were fixed in 4% formaldehyde and permeated by 0.2% TritonX-100. Then 10% normal goat serum to block non-specific protein-protein interactions followed by the antibody (1ug/1*10⁶cells) for 45min at 4°C. The secondary antibody used was FITC-conjugated Goat Anti-rabbit IgG(H+L) at 1:200 dilution for 35min at 4°C. Control antibody (green line) was rabbit IgG (1ug/1*10⁶cells) used under the same conditions. Acquisition of >10,000 events was performed.

Gene Info — YWHAB

Entrez GeneID	7529
Protein Accession#	P31946
Gene Name	YWHAB
Gene Alias	GW128, HS1, KCIP-1
Gene Description	tyrosine 3-monooxygenase/tryptophan 5-monooxygenase activation protein, beta polypeptide
Omim ID	601289
Gene Ontology	Hyperlink
Gene Summary	This gene encodes a protein belonging to the 14-3-3 family of proteins, members of which mediate signal transduction by binding to phosphoserine-containing proteins. This highly conserved protein family is found in both plants and mammals. The encoded protein has been shown to interact with RAF1 and CDC25 phosphatases, suggesting that it may play a role in linking mitogenic signaling and the cell cycle machinery. Two transcript variants, which encode the same protein, have been identified for this gene. [provided by RefSeq]
Other Designations	14-3-3 protein beta/alpha OTTHUMP00000031075 OTTHUMP00000031076 brain protein 14-3-3, beta isoform protein 1054 protein kinase C inhibitor protein-1

Pathway

- [Cell cycle](#)
- [Neurotrophin signaling pathway](#)

Disease

- [Autistic Disorder](#)